



POWERink
Power Systems

Project Case Studies



WCS2000D6S in **Columbia**

Diesel Generator Power Station

Prime Power **2281 kVA**

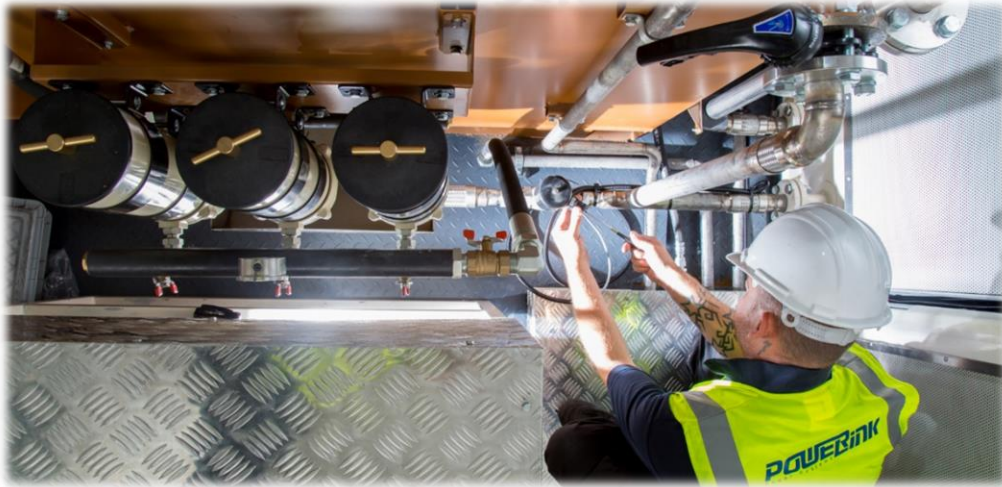
Standby Power **2500kVA**

Powered by Cummins Engine



Two containerized diesel generators on a synchronized mode was set up for a project based in Columbia, as a small power station to supply electricity for the facilities on site.

6.4MW Diesel Genset in Africa- National Club



Large bespoke units for a special project in Africa. Consists of

WPS2000S*3

WPS1000S*2





Power Link Machine (UK) Co., Ltd won a deal to supply the United Nations in Palestine to deliver **150 + gensets** to their region in help to support the refugee crisis.



6 *WPS625S in **Australia**

Diesel Generator Mini Power Station

Total Prime Power **3750 kVA**

Total Standby Power **4125kVA**

Powered by Perkins Engine





3 *WCS1250S, 1* WCS625S in **Australia**

Diesel Generator Mini Power Station

Total Standby Power **44505kVA**

Powered by Cummins Engine

Application: Rural area factory and warehouse





2*WPS650S

Two 650kVA units running on short demand power supply for a medical plant.

Operation on a continuous basis for a month for site expansion

Application in Power rental

Powered by Perkins

2*WPS500S

Extra configuration of larger fuel tanks for two 500kVA units, operating in a data centre in Myanmar.





3*WCS1250S

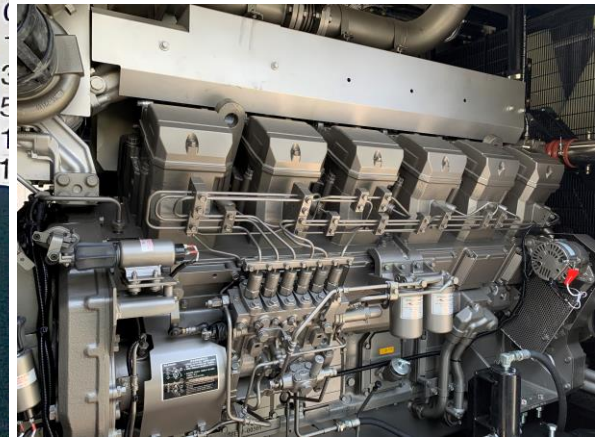
3 units of 3400kVA prime power in **Kuwait** providing power for a local factory.

It is also equipped with a large fuel tank to ensure the smooth operation during prime power supply.

2*WMS1500S

3000kVA prime power diesel generator powered by
Mitsubishi

Supplying power to a data centre in Myanmar





400kw Natural Gas CHP Russian Project

CHP: CG400-NG

Electric Power: 400kWe

Heat Power: 460kWt

Application : Residential

400kw Natural Gas CHP





Russian 500kw Natural Gas CHP Project

CHP: 2*CG250S-NG

Electric Power: 500kWe

Heat Power: 560kWt

Application : Residential

500kw Natural Gas CHP





Russian 250kw Natural Gas CHP Project

CHP: CG250S-NG

Electric Power: 250kWe

Heat Power: 330kWt

Application : Hotel

250kw Natural Gas





Russian 400kw Natural Gas CHP Project

CHP: CG250S-NG

Electric Power: 250kWe

Heat Power: 330kWt

Application : Hotel

400kW Natural gas CHP



Agricultural and animal husbandry biogas in Brazil

CHP: 1xGXC75C-BG
Electric output mode: Low voltage Internet
Field / fuel: Agricultural and animal husbandry/Biogas
Total output power: 75kW



75kW biogas CHP system engineering project



Burkina Faso 1.1MW biogas generating unit project



1.1MW biogas CHP system engineering project

CHP: 1xCG1000S-BG, 1xCG100S-BG

Electric output mode: Low voltage Internet

Field / fuel: Thermolectric steam triple

supply / biogas Total output power: 1.1 Mw_{el}



Korea 520kW biogas generating unit project

CHP:1xCG520S-BG

Field / fuel: Pig farm/ biogas

Total output power: 520kWe



520kW biogas CHP system engineering project



Czech organic wastewater treatment project



200kW biogas CHP system engineering project

CHP: 1xGXC200S-BG

Field / fuel: organic wastewater/biogas

Total output power: 200kWe

Azerbaijan 1MW landfill gas generating unit project



CHP:1xPB1000S-BG

Field / fuel: Garbage power / landfill gas supply

Total output power: 200kWe

1MW biogas CHP system engineering project





UK 250kW Power Generation Project

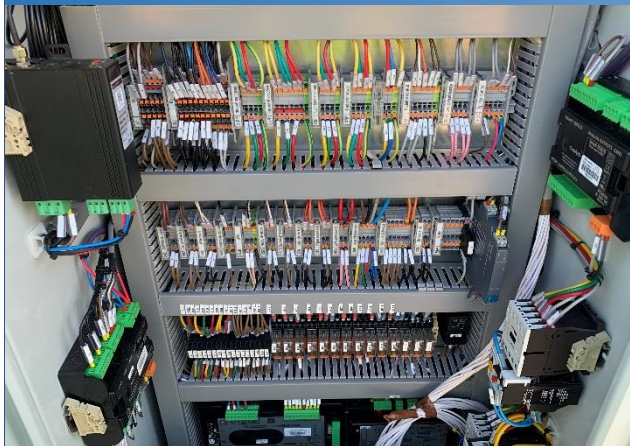
Unit: GXE250C-NG

Electric Power: 250kWe

Application : Factory

Grid requirement G99 approved (UK)

250kW Natural Gas Generator





UK 250kW Power Generation Project

Unit: GXE250-BG

Electric Power: 250kWe

Application : Landfill site

250kW Landfill Gas Generator





Songlin Pig Farm 200kW biogas CHP Project

CHP: GXC200S-BG

Electric Power: 200kWe

Heat Power: 271kWt

Application :Pig Farm

200kW biogas CHP





Qingpu Agricultural Park Biogas Cogeneration Project

CHP: 2*GXC100-BG

Electric Power: 200kWe

Heat Power: 266kWt

Application : Qingpu Agricultural Park Waste Management Centre

200kW biogas CHP





2MW electric - thermal - steam triple supply for organic

CHP: 2xCG1000S-BG

Electric output mode: 10.5kV high voltage Internet

Field / fuel: Thermoelectric steam triple supply /

biogas Total output power: 2MW

2MW biogas CHP



200kW Organic Wastewater Treatment Plant

Unit: GXE200C-BG

Electric Power: 200kWe

Application: PET manufacturing plant



200kW biogas system engineering project



Dairy Cow Dung Treatment Project in Jiangsu Province



CHP: CG1000S-BG

Field / fuel: cow dung / biogas

Total output power: 1MweI

2MW biogas CHP system engineering project



Jiangxi livestock and poultry manure treatment project

CHP: 2x CG1000S-BG

Field / fuel: livestock manure / biogas

Total output power: 2 MW



2MW biogas CHP system engineering project





+44(0)1977689100



Info.uk@powerlinkworld.com



www.powerlinkworld.com

THANK YOU!