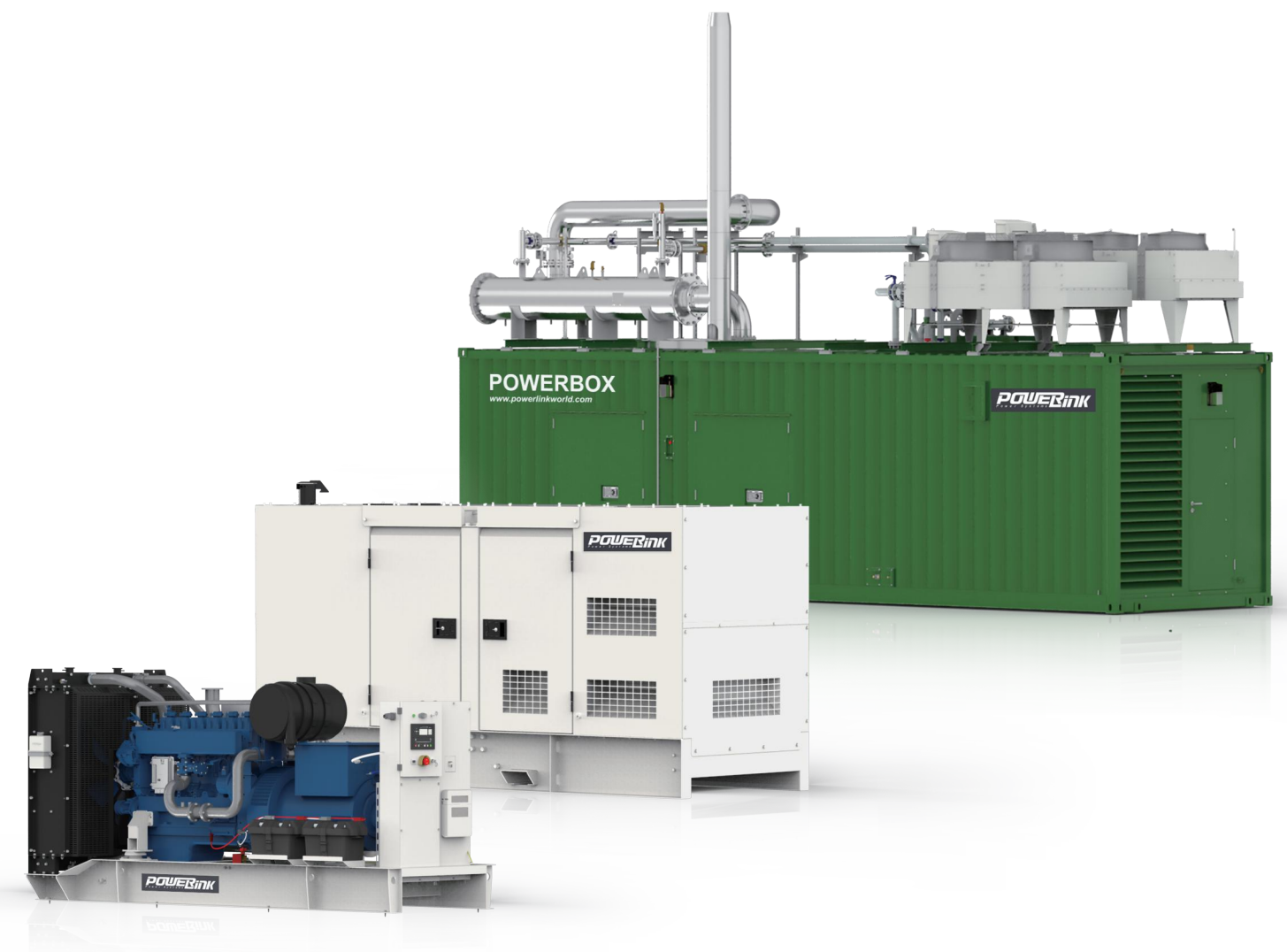


# Natural Gas Generator Set

RELIABLE • EFFICIENT • SAFE • POWER





# POWERLINK

## ABOUT US

PowerLink, founded in 2001, is a manufacturer focusing on gas cogeneration. PowerLink is committed to provide global users with advanced technology and excellent quality distributed Cogeneration Equipment and system solutions for natural gas and biogas. There is one R&D center and three manufacturing factories across the world. PowerLink has a global distribution marketing network with more than 200 sales service providers in more than 100 countries, and has set up subsidiaries in China, the United Kingdom, the United States and Australia. PowerLink insists on providing professional and high-quality products and services for global users, and on providing advanced, environmentally friendly, safe and valuable green energy products and systems for users.

PowerLink Natural Gas Cogeneration is suitable for industrial users such as hotels, hospitals, schools, clubs, large-scale commercial organizations and factories. It can provide users with a system solution of cogeneration of heat, power and cold. The power ranges from 10 Kw to 2000 Kw. It belongs to advanced distributed energy products. It can provide users with a new choice of energy supply. Compared with traditional energy, the cost of energy is greatly reduced.

PowerLink biogas cogeneration is suitable for anaerobic fermentation of organic matter in agriculture and animal husbandry or biogas power generation in COD degradation process of industrial organic wastewater. The output power of the unit is from 50Kw to 2000 Kw. The generated power can be used for self-use or residual power transmission grid or all transmission grid. It belongs to advanced renewable distributed energy products and installed in large quantities in industrial and agricultural users.

PowerLink Gas Generator is suitable for natural gas, petroleum associated gas and low thermal value gas fuel. Its power output ranges from 12 Kw to 2000 Kw. It provides a complete solution for petroleum exploitation, traditional energy substitution and energy regeneration.

From concept to finished product delivery, we strictly implement the product quality system of ISO 9001:2000. Every product has passed strict and standard manufacturing, testing and inspection to ensure reliable quality.

PowerLink is not only a single equipment manufacturer, but also a solution provider for energy systems in various industries. It develops, manufactures, distributes, run projects, provide services, and invests in distributed energy resources in the field of energy equipment. PowerLink has become a global advanced, green, environmentally friendly and safe energy system supplier.

**POWERLINK**  
POWER SYSTEMS  
威速保德电力设备（上海）有限公司  
Powerlink Machine (Shanghai) Co., Ltd.





## Powerlink Natural Gas Generator Set

### Efficient and environmentally friendly energy solution

- Meet the demand for natural gas power generation in many fields.
- Highly integrated modular structure, can be quickly installed and put into use.
- Flexible grid-Connection technology, optional for island or grid-connected operation mode.
- Advanced intelligent project life cycle management system.
- 24/7 after-sales service, spare parts support services and so on so that users would not have to worry about later matters.
- customised design according to customer needs.





# WIDELY USED IN MANY FIELDS

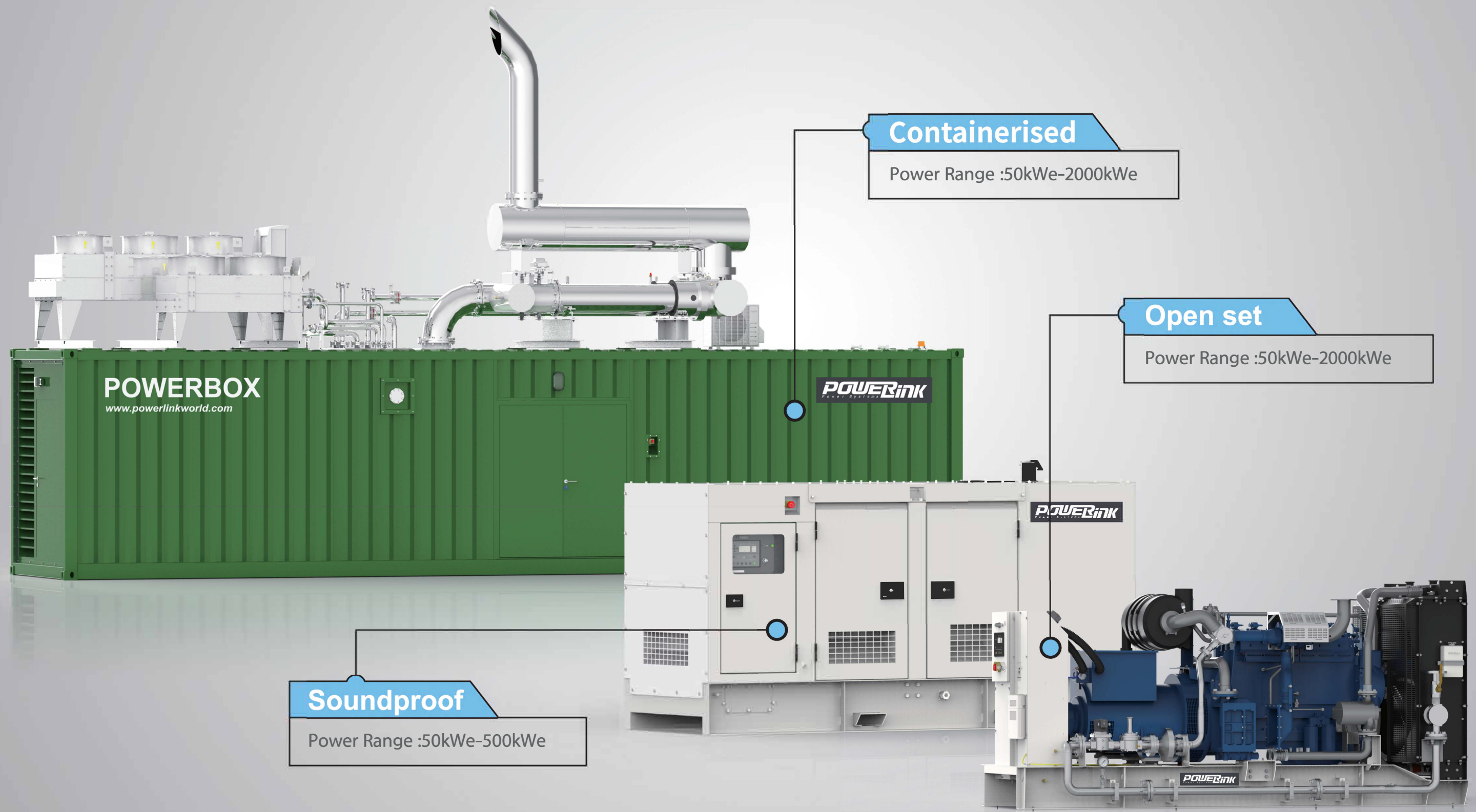


## MAIN APPLICATION:

- Gas power station
- Oil-field production
- Commercial building
- Factory
- Residential area
- Remote areas where there is a scarce in electricity



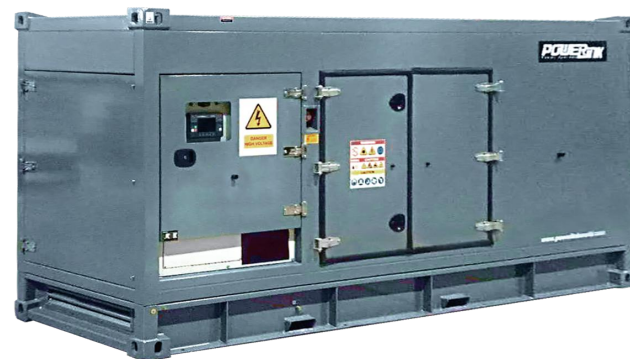
# NATURAL GAS GENERATOR SET





# POWERLINK NATURAL GAS GENERATOR SET

- Low noise, 65dBA@7m (Soundproof)
- 24/7 continuous operation
- Low maintenance cost
- Simple to operate and design to suit for water/land transport
- Compatible at ambient temperature of -10 to 50 °C
- High electrical efficiency  $\geq 36\%$



Professional air intake and exhaust design, good cooling effect



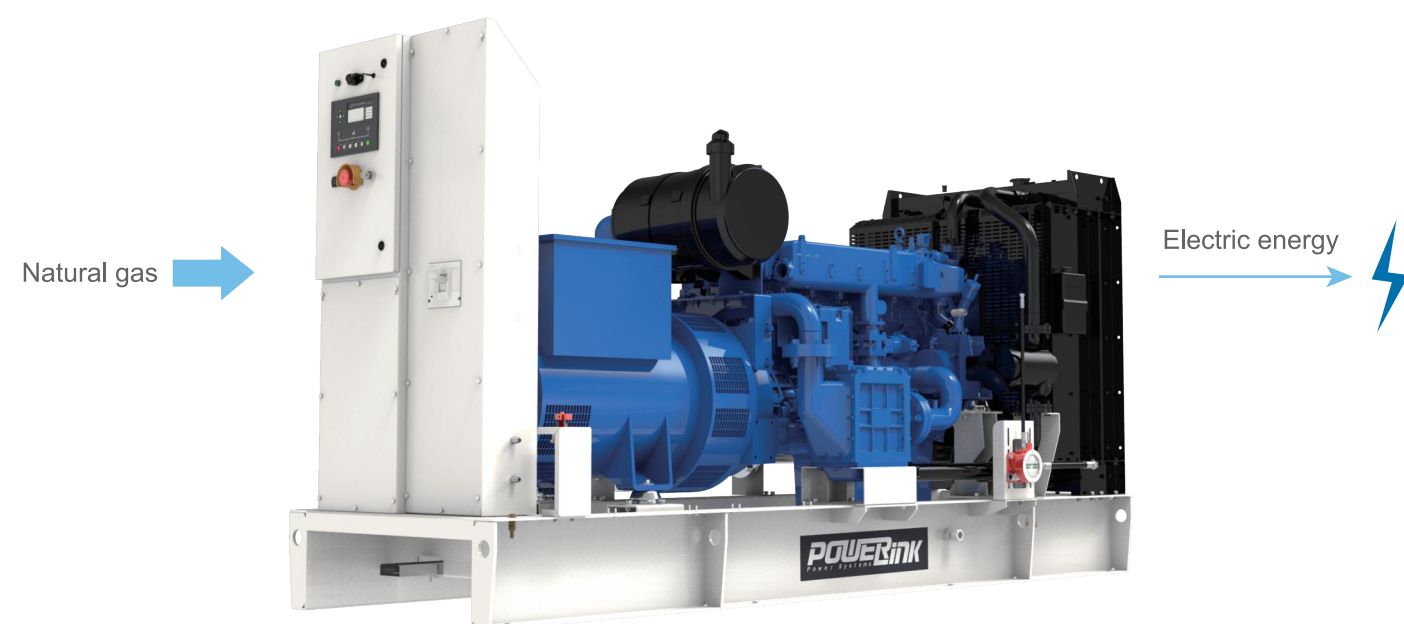
Ultra low exhaust emissions, Ensure cleanliness and environmental protection



Fully automatic unattended, automatic start and stop



The unit has stable and reliable operation statuses, also able to run continuously.

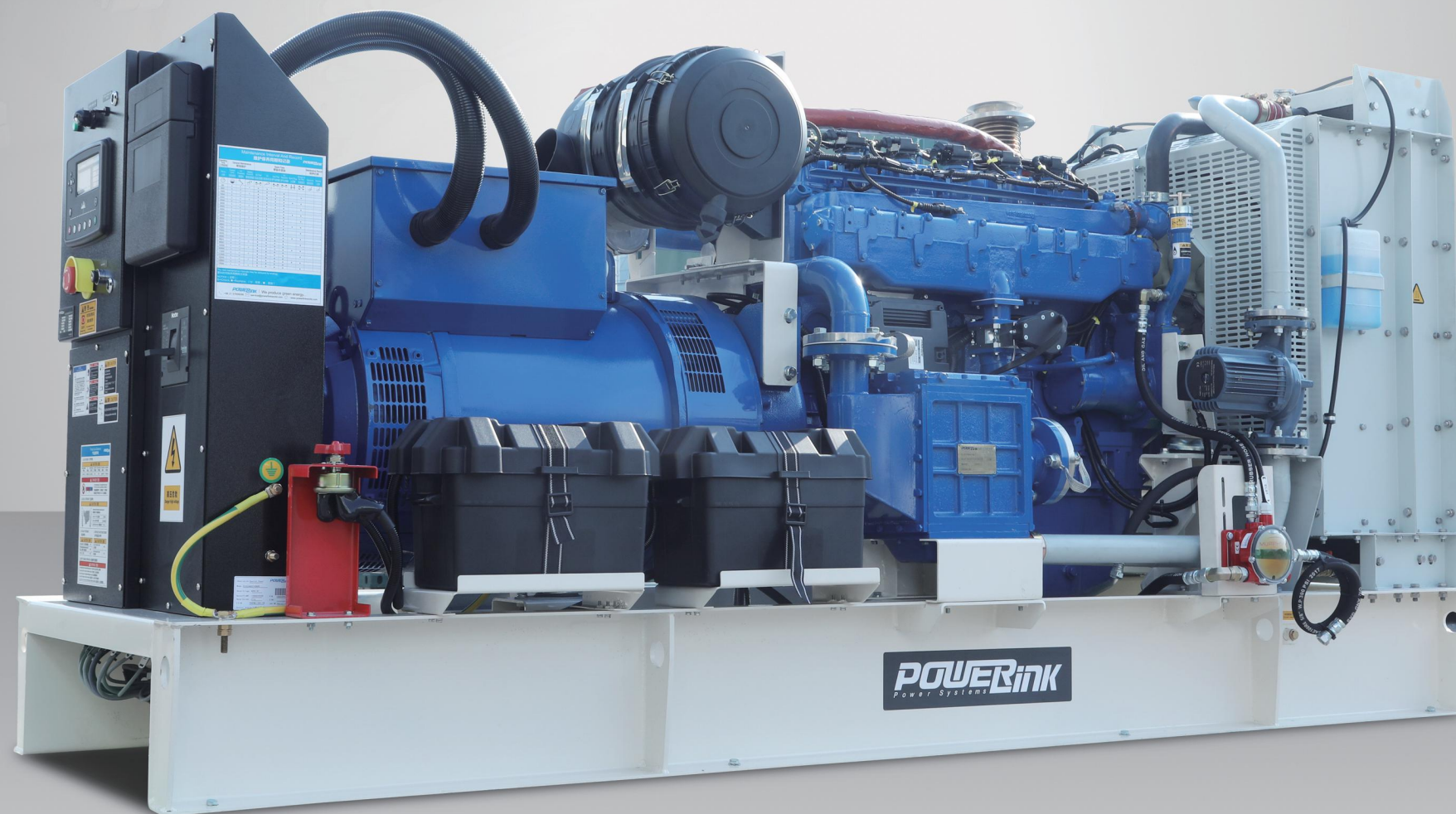


## STANDARD CONFIGURATION

✓ Gas engine	✓ PLC control cabinet
✓ AC alternator	✓ Main circuit breaker
✓ Gas train	✓ Remote control / AMF communication interfaces
✓ Mixer	✓ Oil filter
✓ Throttle valve	✓ Air filter
✓ Radiator and Cooling fan	✓ Muffler
✓ Vibration isolator	✓ Charger
✓ Free maintenance battery with isolator	✓ Emergency stop button
✓ Soundproof canopy or container	



# POWERFUL ENGINE



## POWERLINK NATURAL GAS GENERATOR SET MAIN FEATURES

### An efficient and durable engine

- Cylinder unit optimized for better maintenance achievement, standardized parts to reduce the requirement to stock spare parts, shorten the time spending on the maintenance, save up to 20% of the service cost.
- The high overall efficiency achieves high profitable result ; at the same time it can reduce carbon deposition within the engine cylinder combustion chamber, Reducing the cylinder wear and prolongs the service life.

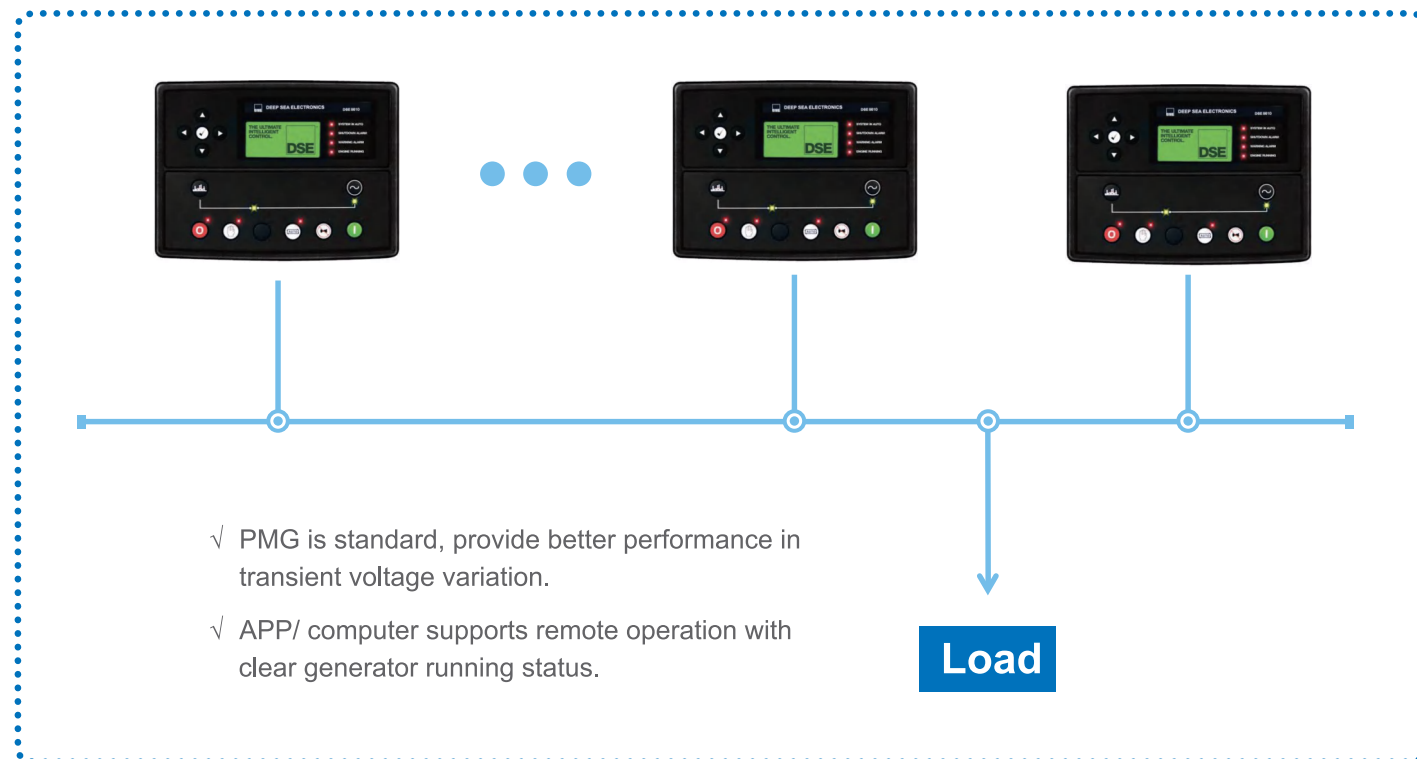
### The reliable generator

- Short-term current up to 300% (3 IN): 10S, greatly enhance the protection of the generator.
- Power generation efficiency up to 96%, low thermal radiation, PMG generator to maintain long-term operation.
- Long services life, 8000 hours a year of continuous operation.



# POWERLINK NATURAL GAS GENERATOR SET MAIN FEATURES

- Multiple units synchronization and load shedding function.
- Optimize operation according to the load requirement to achieve the best fuel efficiency.
- Stable operation and high reliability.



## Ultra low noise control

- Using variable speed fans to adjust the fan speed by load and site condition to achieve better fuel consumption.
- Integral design: the canopy/container is well attenuated with high density mineral wool, with attenuators, residential silencer Industrial silencer to achieve lower noise emissions.

# Professional after-sales service and spare parts supply system

## 01 Service Contract

- Short term service contract
- Long term service contract
- customised service contract

## 02 Spare Parts

- Genuine factory parts
- Emergency replacement parts

## 03 Field service

- Overhaul
- Debugging
- Repair

## 04 Maintenance plan

- Investigation and analysis
- Post-processing
- Maintenance
- Upgrade
- Repair scheme
- Standard
- Extension
- Upgrade

## 05 Technical training

- Operation training
- Maintenance training
- Service training
- Device management

## 06 Online customer support

- Remote diagnosis
- Reception
- Technical data base
- Software upgrade



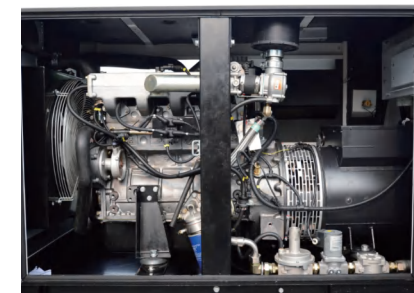
# GR SERIES



**Small sized**

## PRODUCT FEATURES:

- Power range 10-30 kWe.
- Compact structure and small size.
- Reliable running, easy operation.
- Highly protected in harsh environments.
- Excellent oil filtration system.



## Main Parameters

Model	Electrical power(kW)		Electrical efficiency
	50/380V-415V	50/380V-415V	
GR12S-NG	12	8.4	28.6%
GR16S-NG	16	9.6	29.1%
GR24S-NG	24	12	29.5%
GR30S-NG	30	20.3	29.8%



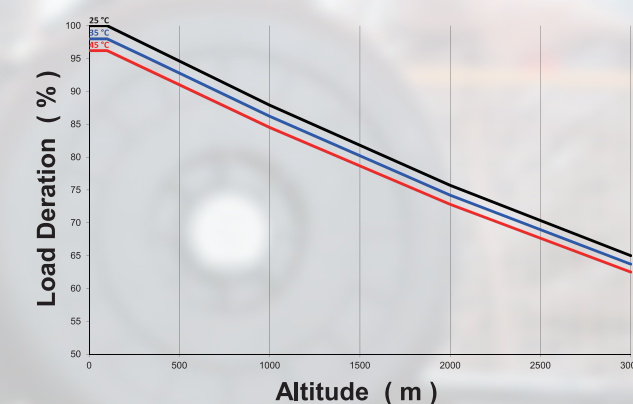
## GXE SERIES



## High Performance-price Ratio

### PRODUCT FEATURES:

- Power range 50-1000 kW.
- Whole system is completely developed and manufactured by PowerLink
- GCC742 control system, advanced intelligence, automatic control.
- Up to 6000 hours of continuous operation time per year.
- Low cost of investment and short pay pay period.



### Main Parameters

Model	Electrical power (kW)	Electrical efficiency	Voltage
GXE50-NG	50	36.5%	Standard voltage 380-480V  Optional voltage 200-240V
GXE100-NG	100	37.5%	
GXE150-NG	150	37.7%	
GXE200-NG	200	37.2%	
GXE250-NG	250	38.3%	
GXE350-NG	350	38.8%	
GXE550-NG	550	38.4%	
GXE800-NG	800	38.2%	
GXE1000-NG	1000	38.1%	



## GE SERIES



## High Value

### PRODUCT FEATURES:

- Power range 50-1000 kW.
- Core parts purchased from world top brands.
- Intelligent internet of things IoT control system PCC300.
- Flexible grid-Connection technology, optional for island or grid-connected operation mode.
- Up to 8000 hours of continuous operation time per year.

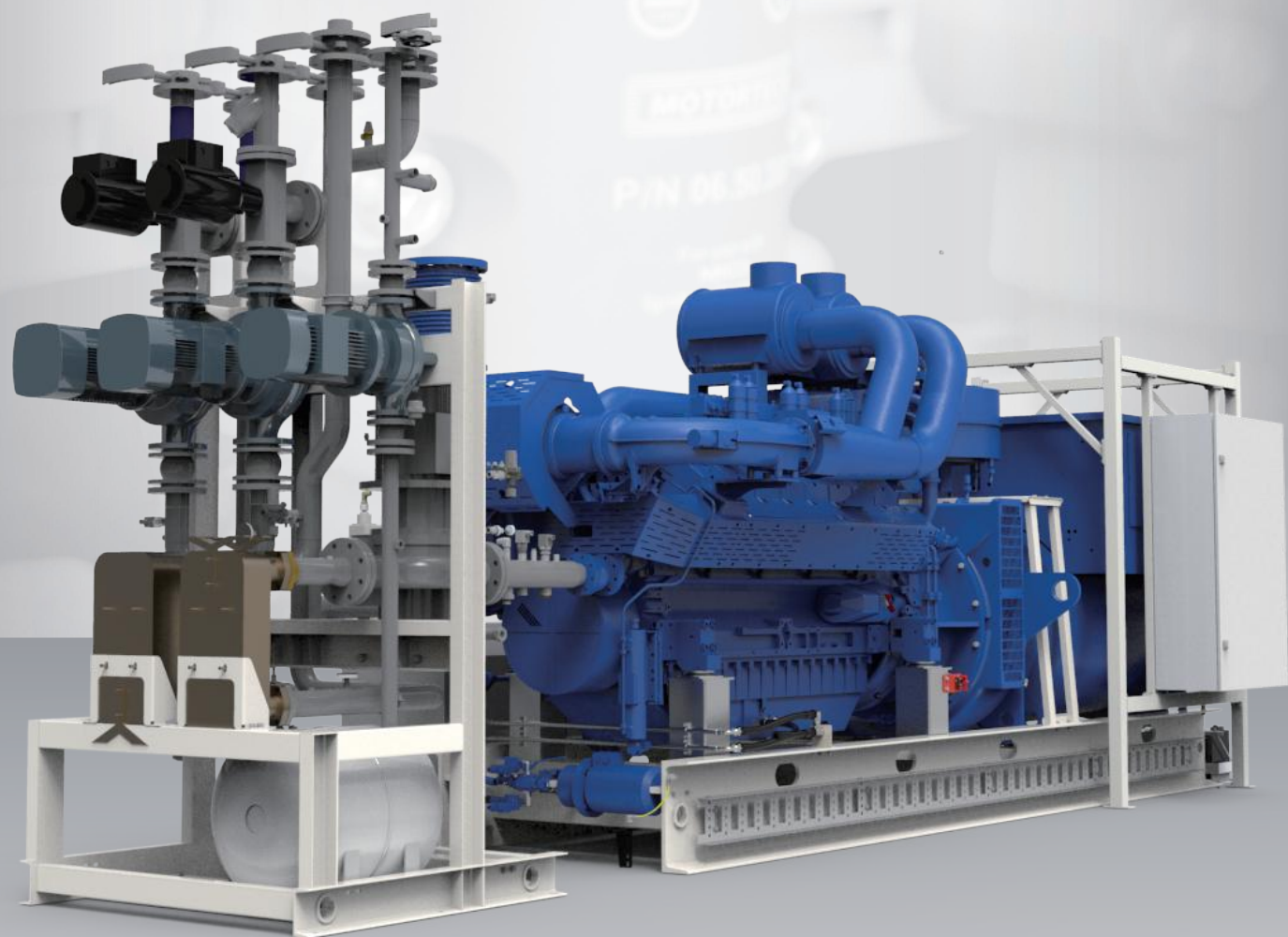


### Main Parameters

Model	Electrical power (kW)	Electrical efficiency	Voltage
GE66-NG	66	37.0%	Standard voltage 380-480V  Optional voltage 200-240V
GE100-NG	100	38.0%	
GE200-NG	200	37.2%	
GE220-NG	220	43.4%	
GE350-NG	350	41.9%	
GE430-NG	430	39.6%	
GE520-NG	520	38.8%	
GE1000-NG	1000	38.7%	



# TGE SERIES



## High Value

### PRODUCT FEATURES:

- Power range 600-2000kWe.
- Core parts purchased from world top brands.
- TPEM intelligent control system, can be paralleled or connected to the grid.
- Flexible grid-connected technology, optional for island or grid-connected operation mode!
- Up to 8000 consecutive hours of connectivity per year.



### Main Parameters

Model	Electrical power (kW)	Electrical efficiency	Voltage
TGE600-NG	600	43.3%	Standard voltage 380-480V Optional voltage 200-240V
TGE800-NG	800	43.5%	
TGE1000-NG	1000	43.0%	
TGE1200-NG	1200	43.6%	
TGE1560-NG	1560	43.2%	
TGE2000-NG	2000	44.4%	
TGE2300-NG	2300	45.0%	