

**5-VMK 25**  
**5-VFK 25**

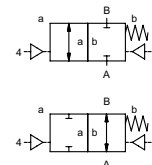
valve type with pilot valve

# coaxial valve

## type VMK 25 VFK 25



**2/2 way valve** externally controlled  
**pressure range** PN 0-100 bar  
**orifice** DN 25 mm  
**connection** thread/flange  
**function** valve normally closed symbol **NC**  
 valve normally open symbol **NO**



**⚠** Above stated body materials refer to the valve port connections that get in contact with the media only!

**design** pressure balanced, with spring return  
**body materials** ① brass ② steel galvanized  
 ③ brass, nickel plated ⑤ without non-ferr. Metals  
 ④ steel, nickel plated ⑥ stainless steel  
 ⑦ aluminium  
**valve seat** synthetic resin on metal  
**seal materials** NBR PTFE, FPM, CR, EPDM

**details needed for main valve**

- orifice
- port
- function NC/NO
- operating pressure
- flow rate
- media
- media temperature
- ambient temperature
- type of actuation

**details needed for pneumatic actuation**

- nominal voltage
- type of protection
- actuation pressure range min/max
- low wattage coil, actuation pressure range 4-7 bar
- pilot valve type

**details needed for hydraulic actuation**

- actuation pressure range min/max
- hydraulic control valve function

**⚠** The valves' technical design is based on media and application requirements. This can lead to deviations from the general specifications shown on the data sheet with regards to the design, sealing materials and characteristics.

**⚠** If order or application specifications are incomplete or imprecise there exists a risk of an incorrect technical design of the valve for the required application. As a consequence, the physical and / or chemical properties of the materials or seals used, may not be suitable for the intended application.

■ specifications not highlighted are standard  
 ■ specifications highlighted in grey are optional

**general specifications**

<b>ports</b>	VMK threads G 1 - G 1 1/2	<b>options</b>	special threads
	VFK flanges PN 16 / 40 / 100		special flanges
<b>function</b>	NC		NO
<b>pressure range</b>	bar 0-16 / 0-40 / 0-64 / 0-100		> 100 bar upon request
<b>Kv value</b>	m³/h 13,3		
<b>leak rate</b>			< 10 <sup>-6</sup> mbar•l•s <sup>-1</sup>
<b>pressure-vacuum</b>	P <sub>1</sub> ⇄ P <sub>2</sub>		pressure side max. 100 bar
			vacuum side leak rate upon request
<b>back pressure</b>	P <sub>2</sub> > P <sub>1</sub>		available (max. 16 bar)
<b>media</b>	gaseous - liquid - highly viscous - gelatinous - pasty - contaminated		
<b>abrasive media</b>			available
<b>damping</b>	opening by throttles on pilot valve		
	closing as marked		bi-directional upon request
<b>flow direction</b>	A ⇄ B		
<b>switching cycles</b>	1/min 200		
<b>switching time</b>	ms opening 50-3000		
	closing 50-3000		
<b>media temperature</b>	°C direct mounted pilot valve 60		remote mounted pilot valve outside temperature range of media max. 160 °C
<b>ambient temperature</b>	°C direct mounted pilot valve 50		
<b>flush ports</b>			available
<b>leak ports</b>			available
<b>limit switches</b>			inductive / mechanical upon request
<b>manual override</b>	via pilot valve		
<b>approvals</b>			LR/GL/WAZ
<b>mounting</b>			mounting brackets
<b>weight</b>	kg VMK 6,7 VFK 9,0		
<b>additional equipment</b>			upon request

**electrical specifications**

<b>nominal voltage</b>	U <sub>n</sub> DC 24 V	<b>options</b>	special voltage upon request
	U <sub>n</sub> AC 230 V 50 Hz		special voltage upon request
<b>power consumption</b>	DC 4,8 W		2,5 W
	AC pick up 11,0 VA holding 8,5 VA		
<b>protection</b>	IP65 (P54) acc. DIN 40050		
<b>energized duty rating</b>	ED 100%		
<b>connection</b>	plug acc. DIN EN 175301-803 form B, 4 positions x90° / wire diameter 6-8 mm		
<b>optional</b>	M12x1 connector acc. DESINA		connector acc. VDMA
<b>additional equipment</b>	illuminated plug with varistor		
<b>media</b>	60°C		
<b>ambient</b>	50°C		
<b>explosion proof</b>	E Ex e II T5	nominal voltage U <sub>n</sub>	DC 24 V 3,25 W
		power consumption	AC 230 V 50 Hz 2,90 W

**pneumatic specifications**

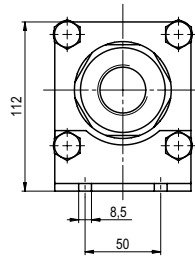
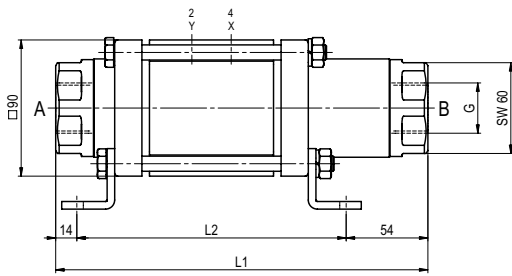
<b>actuation pressure range</b>	bar 4-10	<b>options</b>	
<b>air consumption</b>	cm³/stroke 18		
<b>cycle speed</b>			main valve speed variable by throttles on pilot valve
<b>control</b>			preferably 5/2 way pilot valve
<b>pilot valve interface</b>			ISO 1
<b>actuator ports</b>	2/4 G 1/8		G 1/4

**hydraulic specifications**

<b>actuation pressure range</b>	bar 15-30 / 30-60	<b>options</b>	
<b>control</b>			preferably 4/2 way control valve
<b>actuator ports</b>	X/Y G 1/4		NPT 1/4
<b>by media</b>			

# type VMK 25

function: **NC**  
closed when not energized

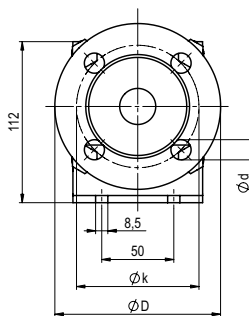
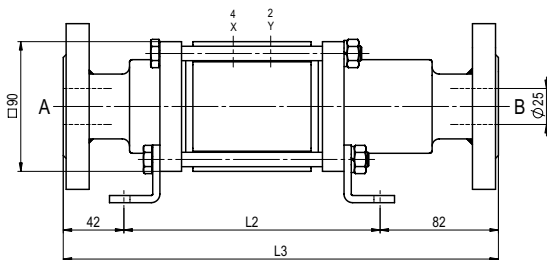


constructive length	L1	L2	L3
standard	246	178	302
with inductive limit switches	260	192	316
with force-feed lubrication nipple	276	208	332
with mechanical limit switches	270	202	326

flanges PN	DIN	ØD	Øk	Ød
16	EN 1092-1	115	85	14
40	EN 1092-1	115	85	14
100	EN 1092-1	140	100	18

# type VFK 25

function: **NO**  
open when not energized



## pneumatic specifications

