

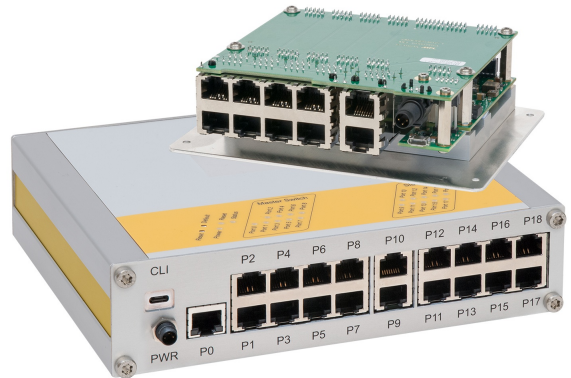
Most flexible and rugged managed Gigabit Switch with wide Temperature and Voltage Range

The new μ MAGBES Family is a 10-19 port manageable Gigabit Ethernet switch of the 4th generation MPL switches. The solution is designed according to MPL's design philosophy which includes; flexibility, low power, fanless, extended temperature capability, and long-term availability.

Dättwil Switzerland, May 2020

All μ MAGBES configurations are extremely compact and start with a size of 136mm x 113mm x 50mm. For integration in an existing cabinet or housing, the switch is also available in an open frame configuration with a mounting plate for easy integration. Hence it is the perfect solution to be customized and integrated in small places.

The input power requirement of the μ MAGBES is 5-36VDC and the device uses less than 6W at full speed with 10 ports operational. The switch can be operated in an environment of -20°C up to +60°C, and optionally -40°C to +85°C and does not need to be cooled by a fan.



In addition to the RJ45 configuration, the μ MAGBES is also available with M12 connectors or can be integrated in a 19" rack enclosure. MPL also provides solutions with an IP67 MIL housing and MIL 38999 connectors of the customer choice. The same applies if fiber ports are required.

The new μ MAGBES is designed to be operated in a Master-Slave configuration, making a flexible system with a cascaded switch easy. The solution is available with 10, 19 ports and more, including a Command Line Interface (CLI) option. All ports have status LEDs, showing the activity and speed of each port and are available on an external LED panel. The same applies for the reset switch and the default settings.

The μ MAGBES products supports features such as (but not limited to):

- Configurable via Web Interface (including SSL), Telnet, SNMP (incl. SNMPv3) or RS232/USB (CLI)
 - Port-based and IEEE 802.1Q VLAN
 - IEEE 802.1D Rapid Spanning Tree
 - IEEE 802.1X MAC Address Checking
 - Quality of Service
 - Port monitoring
 - Switch Statistics
- Firmware Update via HTTP or TFTP
- Down- and up-loadable configuration files in XML format
- GMPv3 support



All MPL products are designed for long-term availability and the μ MAGBES Family will be available for at least 10 years. MPL's own component stock guarantees repairs for up to 20 years. Extended temperature ranges can be fulfilled and are tested in MPL's own climatic chambers according to customer's request.

The solution meets or exceeds the most common standards. Particular references are: EN 55022, EN 55024, EN 61000, MIL-STD-461E, EN 60068, EN 50155, MIL-STD-810-F, EN 60601, EN 60950, CE, IEC 60945, IACS and E10.

For more specific information, please visit or www.mpl.ch/t2873.html contact MPL AG directly.

Contact information

Remy Lörtscher
MPL AG
Täferstrasse 20
CH-5405 Dättwil, Switzerland
Phone: +41 (0)56 483 34 34
info@mpl.ch - www.mpl.ch

