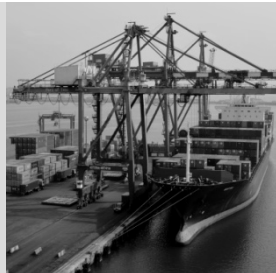
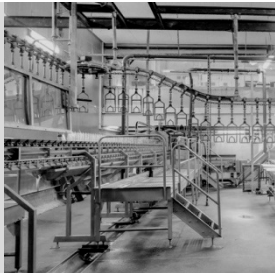


2019

Product Selector Q1



Content

Company profile

Content	1
Company intro	1
Our solutions	2

Products

Box camera enclosures	3
Special box camera enclosures	5
Stainless steel and explosion proof box camera enclosures	6
Stainless steel and explosion proof dome camera enclosures	7
Pan and tilt system	8
Stainless steel and explosion proof pan and tilt system	9
Pan and tilt motors	10
Illuminators	11
Pendant brackets	12
Pole brackets	13
Wall brackets	13
Control panels	14
Accessories	14

Company intro



LonTrend

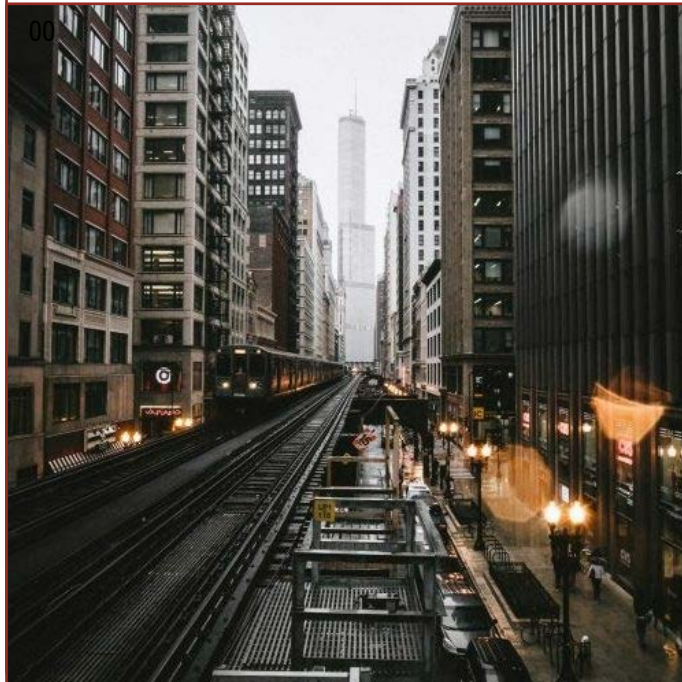
LonTrend is a new brand officially registered in 2012 focused exclusively on the design and manufacturing of camera housings, pan tilt units and IR illuminators, however our precision and die-cast business has started since 1985. With strong research and development background and capability, LonTrend aims to comprehensively meet your security needs in the simplest manner possible.

Our solutions

For city and traffic surveillance

IR illuminator plays a key role in securing citizens' safety at night, and secures continuous 24/7 the city and remote sites to prevent accidents during the night.

From tunnel to airport project, we have solutions! In certain situations, IR in bullet/dome camera is not strong enough for some special projects, like ANPR, city surveillance, airport projects. LonTrend provides a series of IR solutions: built-in IR, IR integrated with housing, independent external IR to solve your problem.



For harsh environment project

Explosion proof housing plays a key role in protecting cameras from corrosive and explosive applications.

From marine to oil and gas projects, we have solutions!

LonTrend provides normal stainless steel housing to explosion proof housing (ATEX/CNEX) with the flexibility to add a variety of accessories (ex: 60 W HiPoE, IR up to 540 m, pan and tilt unit) and customization service. We support all kinds of project requirement for you.



LonTrend supports special project

In CCTV industry, pan tilt unit has been widely used to secure wider and larger outdoor space because of its extraordinary pan tilt flexibility comparing with traditional PTZ camera.

In fact, as long as you need to control the horizontal/vertical movement of your equipment, pan tilt unit could give you a hand. From our project supporting experience, pan tilt unit has been used to support solar panel, antenna or bird control projects in order to increase the efficiency of the system.

LonTrend pan tilt unit with max loading capacity up to 80 kg, customizable pan tilt range and speed, we have confidence to be your best project supporter.



Box camera enclosures



	LTEV01	LTEV02	LTEV07	LTEG05	LTEG06	LTEG15
Protection rating	IP68	IP66	IP67	IP66	IP66	IP66
Vandal proof	Yes	Yes	Yes	-	-	-
Material	Die-casting Aluminum	Polycarbonate	Die-casting Aluminum	Extruded Aluminum	Extruded Aluminum	Extruded Aluminum
Cable management bracket	Yes	Yes	-	-	Yes	-
Sunshield	Yes	Yes	-	Yes	Yes (adjustable)	-
Type	Side opening	Side opening	Side opening	Top opening	Side opening	Side opening
Input power	12V DC/24V AC/220 V AC/PoE (optional)	12V DC/24V AC/220 V AC/PoE (optional)	12V DC/24V AC/220 V AC/PoE (optional)	12V DC/24V AC/220 V AC/PoE (optional)	12V DC/24V AC/220 V AC/PoE (optional)	12V DC/24V AC/220 V AC/PoE (optional)
Heater/Blower	Optional	Optional	Optional	Optional	Optional	Optional
Wiper	Optional	-	-	Optional	-	-
Built-in illumination	30 m (LTEV01-R30), 50 m (LTEV01-R50), 80 m (LTEV01-R80)	30 m (LTEV02-R30)	50 m (LTEV07-R50), 80 m (LTEV07-R80), 90 m (LTEV07-R90), 120 m (LTEV07-R120), 160 m (LTEV07-R160),	Optional with LTIA series	30 m (LTEG06-R30), 50 m (LTEG06-R50)	30 m (LTEG15-R30), 50 m (LTEG15-R50)
Internal usable size (W × H × L)	100 × 80 × 335 (mm)	95 × 80 × 250 (mm)	120 × 90 × 330 (mm)	90 × 72.5 × 250 (mm) (LTEG05), 90 × 72.5 × 330 (mm) (LTEG05M), 108 × 90 × 350 (mm) (LTEG05L), 200 × 120 × 560 (mm) (LTEG05X), 200 × 120 × 710 (mm) (LTEG05XL)	85 × 85 × 300 (mm)	95 × 70 × 260 (mm)
Weight	3.6 kg, 4.3 kg (wall mount bracket included)	1.9 kg, 2.58 kg (wall mount bracket included)	4 kg, 4.6 kg (wall mount bracket included)	Refer to datasheet	2.75 kg, 3.1 kg (wall mount bracket included)	2.6 kg (wall mount bracket included)

Box camera enclosures



	LTEV10	LTEV11	LTEV13
Protection rating	IP68	IP68	IP66
Vandal proof	Yes	Yes	Yes
Material	Die-casting Aluminum	Die-casting Aluminum	Die-casting Aluminum
Cable management bracket	Yes	Yes	-
Sunshield	-	-	-
Type	Side opening	Side opening	Side opening
Input power	12V DC/24V AC/220 V AC/PoE (optional)	12V DC/24V AC/220 V AC/PoE (optional)	12V DC/24V AC/220 V AC/PoE (optional)
Heater/Blower	Optional	Optional	Optional
Wiper	-	-	Yes
Built-in illumination	110 m to 120 m	-	-
Internal usable size (W × H × L)	100 × 90 × 275 (mm)	110 × 90 × 320 (mm)	120 × 90 × 320 (mm)
Weight	4.7 kg, 5.5 kg (wall mount bracket included)	3.1 kg, 3.8 kg (wall mount bracket included)	3.1 kg, 3.8 kg (wall mount bracket included)

Special box camera enclosures



	LTEG04	LTEG07	LTEG19	LTEG13	LTEX03
Protection rating	IP66	IP66	IP66	IP66	IP66
Explosion proof certification	-	-	-	-	CNEX Ex d IIC T6 Gb
Vandal proof	-	-	Yes	Yes	Yes
Material	Extruded Aluminum	Extruded Aluminum	Steel/ Polycarbonate	Die-casting Aluminum	AISI 304/316L stainless steel (optional)
Cable management bracket	-	-	-	-	-
Sunshield	Yes	Yes	-	-	-
Type	Top opening, dual screen	Top opening, dual screen	In ceiling	Corner mount	Back opening, water cooling anti heat up to 200 degrees
Input power	12V DC/24V AC/220 V AC/PoE (optional)	12V DC/24V AC/220 V AC/PoE (optional)	-	-	-
Heater/Blower	Optional	Optional	-	-	Optional
Wiper	Optional	Optional	-	-	-
Built-in illumination	60m (LTEG04-R60) 120 m (LTEG04-R120) 30m white (LTEG04-W30)	-	-	-	-
Internal usable size (W × H × L)	70 × 75 × 200 (mm)	108 × 130 × 190 (mm) (LTEG07), 108 × 130 × 260 (mm) (LTEG07L)	100 × 70 × 280 (mm)	80 × 80 × 200 (mm), max camera lens: 150 mm (L)	100 × 280 (Ø × L) (mm)
Weight	3 kg	6.5 kg	2.1 kg	1.8 kg	9.1 kg, 12.9 kg (wall mount bracket included)

Stainless steel and explosion proof box camera enclosures



	LTES06	LTES07	LTEX02	LTEX17	LTEX17-R60	TSAX1730
Protection rating	IP68	IP68	IP68	IP68	IP68	IP68
Explosion proof certification	-	-	CNEX Ex d IIC T6 Gb	CNEX Ex d IIC T6 Gb	CNEX Ex d IIC T6 Gb	ATEX Ex d IIC T6 Gb
Vandal proof	Yes	Yes	Yes	Yes	Yes	Yes
Material	AISI 304/316L stainless steel (optional)	AISI 304/316L stainless steel (optional)	AISI 304/316L stainless steel (optional)	AISI 304/316L stainless steel (optional)	AISI 304/316L stainless steel (optional)	AISI 304/316L stainless steel (optional)
Sunshield	Optional	Yes	Yes	Yes	Optional	Optional
Type	Back opening	Back opening	Back opening	Back opening	Back opening	Back opening
Input power	12V DC/24V AC/220 V AC/PoE (optional)	12V DC/24V AC/220 V AC/PoE (optional)	12V DC/24V AC/220 V AC/PoE (optional)	12V DC/24V AC/220 V AC/PoE (optional)	12V DC/24V AC/220 V AC/PoE (optional)	12V DC/24V AC/220 V AC/PoE (optional)
Heater/Blower	Optional	Optional	Optional	Optional	Optional	Optional
Wiper	-	LTES07-W	Yes	LTEX17-W	LTEX17-W-R60	TSAX1730-W
Built-in illumination	30 m (LTES06-R30)	30 m (LTES07-R30) 60 m (LTES07-R60) 100 m (LTES07-R100)	-	30 m (LTEX17-R30) 60 m (LTEX17-R60) 100 m (LTEX17-R100)	External with LTIX series	External with LTIX series
Internal usable size (W × H × L)	86 × 55 × 270 (mm)	106 × 76 × 344 (mm)	80 × 160 (Ø × L) (mm)	106 × 76 × 344 (mm)	106 × 76 × 344 (mm)	105 × 330 (Ø × L) (mm)
Weight	8.4 kg, 10.3 kg (wall mount bracket included)	12 kg, 13.9 kg (wall mount bracket included)	11.5 kg	12 kg, 13.9 kg (wall mount bracket included)	20 kg, 21.9 kg (wall mount bracket included)	8 kg, 10.5 kg (wall mount bracket included)

Stainless steel and explosion proof dome camera enclosures



LTES10



LTEX07



LTEX09



LTEX13



TSAX0940

	LTES10	LTEX07	LTEX09	LTEX13	TSAX0940
Protection rating	IP68	IP66	IP68	IP68	IP68
Explosion proof certification	-	CNEX Ex d IIC T6 Gb	CNEX Ex d IIC T6 Gb	CNEX Ex d IIC T6 Gb	ATEX Ex d IIC T6 Gb
Vandal proof	Yes	Yes	Yes	Yes	Yes
Material	AISI 304/316L stainless steel (optional)	AISI 304/316L stainless steel (optional)	AISI 304/316L stainless steel (optional)	AISI 304/316L stainless steel (optional)	AISI 304/316L stainless steel (optional)
Input power	Optional	Optional	Optional	Optional	Optional
Heater/Blower	Optional	Optional	Optional	Optional	Optional
Mounting type	Ceiling	In-ceiling	Wall/pendant	Ceiling	Wall/pendant
Internal usable size (Ø × L)	145 × 108 (mm)	110 × 58 (mm)	176 × 195 (mm)	113 × 91 (mm) (LTEX13), 170 × 181 (mm) (LTEX13M)	176 × 195 (mm)
Weight	6.5 kg	4 kg	11 kg	6 kg (LTEX13), 7.5 kg (LTEX13M)	26 kg

Pan and tilt system



	LTSU01	LTSU02	LTSU03	LTSU09
Protection rating	IP66	IP66	IP66	IP66
Explosion proof certification	-	-	-	-
Material	High-strength aluminum	High-strength aluminum	High-strength aluminum	High-strength aluminum
Pan speed	0° to 120° per second adjustable	0.4° to 15° per second adjustable	0.4° to 80° per second adjustable	0° to 60° per second adjustable
Pan range	0° to 360° continuous	0° to 360° continuous	0° to 360° continuous	0° to 360° continuous
Tilt speed	0° to 120° per second adjustable	0.4° to 15° per second adjustable	0.4° to 60° per second adjustable	0° to 40° per second adjustable
Tilt range	-90° to 90°	-10° to 60°	-90° to 90°	-90° to 90°
Sunshield	Yes	Yes	Yes	-
Type	Back opening	Top opening	Back opening	Back opening
Input power	12 V DC	24 V DC	12V DC/24V AC (optional)	10.8 V DC - 18 V DC
Heater/Blower	Optional	Optional	Optional	Optional
Wiper	Yes	Optional	Yes	Yes
Built-in illumination	50 m/100 m (optional)	60 m/120 m (optional)	Customized	500 m
Power Consumption	50 W	40 W	50 W	80 W
Internal usable size (Ø × L)	-	-	-	-
Weight	9.5 kg	9 kg	9.5 kg	13.5 kg

Stainless steel and explosion proof pan and tilt system



	LTSX01	LTSX02	LTSX03	LTSX04	TSAX1930	TSAX1310
Protection rating	IP66	IP66	IP66	IP66	IP68	IP68
Explosion proof certification	CNEX Ex d IIC T6 Gb	CNEX Ex d IIC T6 Gb	CNEX Ex d IIC T6 Gb	CNEX Ex d IIC T6 Gb	ATEX Ex d IIC T6 Gb	ATEX Ex d IIC T6 Gb
Material	AISI 304/316L stainless steel (optional)	AISI 304/316L stainless steel (optional)	AISI 304/316L stainless steel (optional)	AISI 304/316L stainless steel (optional)	AISI 304/316L stainless steel (optional)	AISI 304/316L stainless steel (optional)
Pan speed	10° per second	10° per second	6° to 20° per second (fixed speed adjustable)	1° to 25° per second (fixed speed adjustable)	0.1° to 40° per second (fixed speed adjustable)	0.1° to 40° per second (fixed speed adjustable)
Pan range	0° to 350°	0° to 350°	0° to 360°	0° to 360°	0° to 360°	0° to 360°
Tilt speed	6° per second	6° per second	0.1° to 40° per second (fixed speed adjustable)	1° to 25° per second (fixed speed adjustable)	0.1° to 40° per second (fixed speed adjustable)	0.1° to 40° per second (fixed speed adjustable)
Tilt range	-60° to 60°	-60° to 60°	-90° to 90°	-90° to 90°	-90° to 90°	-90° to 90°
Sunshield	-	Yes	Yes	Yes	Yes	Yes
Type	Back opening	Back opening	Back opening	Back opening	Back opening	Back opening
Input power	24V AC/220 V AC (optional)	12V DC/220 V AC (optional)	220 V AC (optional)	220 V AC (optional)	24 V AC/110 V AC to 260 V AC (optional)	24 V AC/110 V AC to 260 V AC (optional)
Heater/Blower	Optional	Optional	Optional	Optional	Optional	Optional
Wiper	Optional	Optional	Yes	Yes	Yes	Yes
Built-in illumination	Customized	Customized	Customized	Customized	-	Customized
Power Consumption	100 W	100 W	90 W	100 W	90 W	100 W
Internal usable size (Ø × L)	108 × 250 (mm)	132 × 350 (mm)	132 × 260 (mm)	132 × 260 (mm) (dual housing)	78 × 210 (mm)	78 × 210 (mm) (camera enclosure), 100 × 210 (mm) (IR enclosure)
Weight	28.5 kg	20 kg	26 kg	33 kg	19 kg	26 kg

Pan and tilt motors



	LTPM01	LTPM03	LTPM04	LTPM05	LTPM06	LTPM10
Protection rating	IP65	IP66	IP66	IP66	IP66	IP66
Explosion proof certification	-	-	-	-	-	CNEX Ex d IIC T6 Gb
Material	Polycarbonate	High-strength aluminum	High-strength aluminum	High-strength aluminum	High-strength aluminum	AISI 304/316L stainless steel (optional)
Maximum load	7 kg	9 kg	15 kg	15 kg	50 kg	80 kg
Pan speed	5° per second	0.4° to 10° per second	0.4° to 10° per second	0.01° to 60° per second	0.01° to 30° per second	0.01° to 30° per second
Pan range	0° to 355°	0° to 360° continuous	0° to 360° continuous	0° to 360° continuous	0° to 360° continuous	0° to 360° continuous
Tilt speed	Adjust manually	0.4° to 2.5° per second	0.4° to 2.5° per second	0.01° to 30° per second	0.01° to 15° per second	0.01° to 15° per second
Tilt range	-50° to 50° (adjust manually)	-60° to 10°	-60° to 10°	-90° to 40°	-45° to 45° (load 50 kg) (default), -60° to 60° (load 40 kg), -80° to 80° (load 26 kg), -90° to 90° (double load)	-75° to 45°
Preset	0	226	226	80	80	128
Protocol	Pelco-D	Pelco-D/Pelco-P	Pelco-D/Pelco-P	Pelco-D/Pelco-P	Pelco-D/Pelco-P	Pelco-D/Pelco-P
Input voltage	24 V AC/110 V AC/220 V AC (optional)	24 V DC	24 V DC	24 V AC	24 V AC/24 V DC	24 V DC/48 V DC (optional)
Power Consumption	8 W	30 W	40 W	80 W (heater off), 95 W (heater on)	85 W	70 W
Weight	1.8 kg	7 kg	9.3 kg	15 kg	20 kg	21 kg

Illuminators



	LTIA03	LTIA04	LTIA07	LTIL01	LTIL03	LTIX03
Protection rating	IP66	IP66	IP66	IP65	IP65	IP68
Explosion proof certification	-	-	-	-	-	CNEX Ex d IIC T6 Gb
Material	Die-cast aluminum	Die-cast aluminum	Die-cast aluminum	-	-	AISI 304/316L stainless steel (optional)
Illumination distance	65 m (LTIA03-R65), 80 m (LTIA03-R80), 95 m (LTIA03-R95), 120 m (LTIA03-R120), 200 m (LTIA03-R200), 270 m (LTIA03-R270)	30 m (LTIA04-R30, LTIA04-W30), 40 m (LTIA04-R40), 50 m (LTIA04-R50), 70 m (LTIA04-R70, LTIA04-W70), 100 m (LTIA04-R100), 110 m (LTIA04-W110), 150 m (LTIA04-R150), 180 m (LTIA04-W180)	13 m (LTIA07-R13), 15 m (LTIA07-W15), 18 m (LTIA07-R18), 25 m (LTIA07-R25, LTIA07-W25), 40 m (LTIA07-W40), 45 m (LTIA07-R45), 60 m (LTIA07-W60), 65 m (LTIA07-R65), 80 m (LTIA07-W80), 90 m (LTIA07-R90), 100 m (LTIA07-W100)	300 m (LTIL01-R300), 500 m (LTIL01-R500, LTIL01-R500-940, LTIL01- R500-980)	1,000 m	30 m (LTIX03-R30), 60 m (LTIX03-R60), 100 m (LTIX03-R100)
Beam angle	120° (LTIA03-R65), 90° (LTIA03-R80), 60° (LTIA03-R95), 45° (LTIA03-R120), 30° (LTIA03-R200), 15° (LTIA03-R270),	120° (LTIA04-R30, LTIA04-W30), 90° (LTIA04-R40, LTIA04- W70), 60° (LTIA04-R50, LTIA04-W90), 45° (LTIA04-R70, LTIA04- W110), 30° (LTIA04-R100, LTIA04-W150), 15° (LTIA04-R150, LTIA04- W180)	120° (LTIA07-R13, LTIA07-W15), 90° (LTIA07-R18, LTIA07- W25), 60° (LTIA07-R25, LTIA07-W40), 45° (LTIA07-R45, LTIA07- W60), 30° (LTIA07-R65, LTIA07-W80), 15° (LTIA07-R90, LTIA07- W100)	1.5° to 68°, motor driven	1.5° to 68°, motor driven	90° (LTIX03-R30), 45° (LTIX03-R60), 30° (LTIX03-R100)
Power consumption	54 W	28 W	13 W	9 W	25 W	20 W
Wavelength	850 nm/740 nm/940 nm (optional)	850 nm/740 nm/940 nm/White light (optional)	850 nm/740 nm/940 nm/White light (optional)	808 nm/940 nm/980 nm (optional)	808 nm/940 nm/980 nm (optional)	850 nm
LEDs	24 pieces	12 pieces	6 pieces	-	-	-
Weight	4 kg	2 kg	1.3 kg	276 g	470 g	8 kg

Pendant brackets



LTMH02



LTMH07



LTMH15



LTMH18

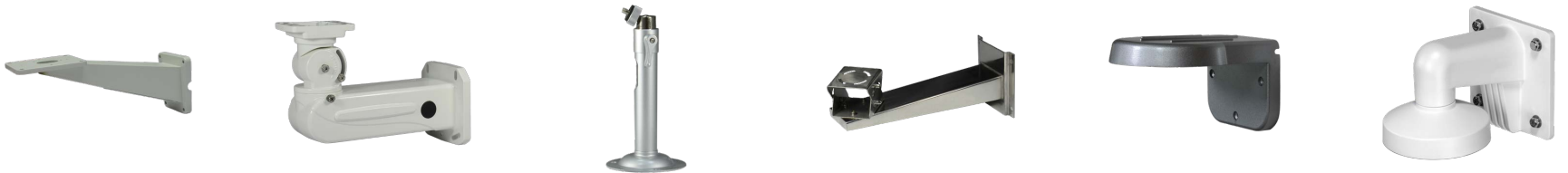
	LTMH02	LTMH07	LTMH15	LTMH18
Maximum load	20 kg	10 kg	2 kg	90 kg
Material	Die-cast aluminum	Steel	Aluminum	AISI 304/316L stainless steel (optional)
Finish	White polyester powder coat	Beige polyester powder coat	Silver polyester powder coat	-
Dimensions (W × H × L)	335 × 611 × 90 (mm)	350 × 230 × 60 (mm)	305 to 465 × 120 (mm) (LTMH15-P, LTMH15-S), 617 to 104 × 120 (mm) (LTMH15L-P, LTMH15L-S)	150 × 150 × 143 (mm)
Weight	0.7 kg	1.5 kg	460 g (LTMH15-P, LTMH15-S), 633 g (LTMH15L-P, LTMH15L-S)	1.7 kg
Related products	LTEV01/LTEG06	LTEV02/LTEG04/LTEG05/ LTEV07	Dome cameras	LTEX09/LTEX13/LTES10

Pole brackets



	LTMH03	LTMH04	LTMH06	LTMH12	LTMH19	LTMH25
Maximum load	20 kg	20 kg	30 kg	-	-	60 kg
Material	Die-cast aluminum	Die-cast aluminum	Die-cast aluminum	Die-cast aluminum	Steel	AISI 304/316L stainless steel
Finish	Beige polyester powder coat	Beige polyester powder coat	White polyester powder coat	Beige polyester powder coat	Beige polyester powder coat	-
Dimensions (W × H × L)	90 to 140 (mm)	105 to 145 (mm)	277 × 75 × 168 (mm)	161 × 241 × 75 (mm) without hoop ring	155 × 200 × 72 (mm) without hoop ring	210 × 160 × 44.5 (mm)
Weight	1.3 kg	0.94 kg	2.4 kg	0.7 kg	1.6 kg	5 kg
Related products	LTEV02/LTEG15	LTEG series	LTEV01/LTEX series	LTEG series	LTEG series	LTEX/LTPM series

Wall brackets



	LTMP03	LTMH01	LTMC04	LTMH08	LTMH10	LTMH23
Maximum load	50 kg	30 kg	2 kg	60 kg	3 kg	3 kg
Material	Die-cast aluminum	Die-cast aluminum	Die-cast aluminum	AISI 304/316L stainless steel (optional)	Die-cast aluminum	Die-cast aluminum
Finish	White polyester powder coat	White polyester powder coat	Silver polyester powder coat	-	Silver polyester powder coat	Beige polyester powder coat
Dimensions (W × H × L)	398 × 90 × 118 (mm)	278 × 138 × 210 (mm)	130 × 90 (H × Ø) (mm)	295 × 150 × 130 (mm)	147 × 110 × 183 (mm)	120 × 122 × 169 (mm)
Weight	1.9 kg	1.8 kg	0.35 kg	1.8 kg	0.7 kg	0.9 kg
Related products	LTPM series	-	-	LTEX/LTES series	LTEG09	-

Control panels



	LTAK01	LTAK02	LTAK04	LTAK05	LTAK08	LTAK09
Interface connector	Can be connected to 32 RS485 nodes	-	6 pins interface, DB 9 pins female outlet, RJ45	6 pins interface, DB 9 pins female outlet, RJ45	6 pins interface, DB 9 pins female outlet	BNC, RS-485, RJ45
Communication baud rate	1,200 bps, 2,400 bps, 4,800 bps, 9,600 bps	2,400 bps, 4,800 bps, 9,600 bps, 19,200 bps	2,400 bps, 4,800 bps, 9,600 bps, 19,200 bps	2,400 bps, 4,800 bps, 9,600 bps, 19,200 bps	1,200 bps, 2,400 bps, 4,800 bps, 9,600 bps, 19,200 bps	2,400 bps, 4,800 bps, 9,600 bps, 19,200 bps
Communication	RS-485	RS-485	RS-485, RS-422, RS232	RS-485, RS-422, RS232, USB2.0	RS-485	RS-485, RS-232
Protocols	Pelco-D, Pelco-P	Pelco-D	Pelco-D, Pelco-P	Pelco-D, Pelco-P	Pelco-D, Pelco-P	Pelco-D, Pelco-P
Transmission distance	500 m	1200 m	1200 m	1200 m	1200 m	1200 m
Input power	12 V DC	12 V DC	9 V DC to 12 V DC	9 V DC to 12 V DC	12 V DC	12 V DC
Power consumption	6 W	6 W	5 W	4.2 W	6 W	6 W
Dimensions (L × W × H)	330 × 145 × 100 (mm)	150 × 130 × 96(mm)	377 × 160 × 98 (mm)	290 × 181 × 95 (mm)	306 × 150 × 99 (mm)	420 × 265 × 175 (mm)
Weight	1.3 kg	0.5 kg	2 kg	1.6 kg	1.3 kg	2.8 kg

Accessories



LTMP01	LTAW01	LTAB03	TSAR0100
Anti Vibration Mount	Washer	Explosion Proof Power Box	ATEX Ex d IIC T6 Gb Washer

Any application,
we have **solutions.**



LonTrend Corporation
5F., No.407, Sec. 6, New Taipei Blvd., Taishan Dist., New Taipei City, 24355, Taiwan
Tel: +886 2 29020082
E-mail: sales@lontrend.com
www.lontrend.com.

