

LIGHT . FLEXIBLE . STRAIGHT



With new technology, materials and specialized equipment, Hsin Yung Chien provides various conveyor belts with good function, high quality and excellent capability of transportation to satisfy the demands of the customers.

HYC HSIN YUNG CHIEN CO., LTD.

Headquarter :
No. 294, Nan Kung 3Rd., Nan Kung Industrial Zone, Nantou, Taiwan.
Zip Code : 54067
TEL : 886-49-2263888 FAX : 886-49-2263168
E-mail : hyc@hyc-king.com
Web site : www.hyc-king.com

LIGHT DUTY CONVEYOR BELT





Company Profile



Founded : 1964
Location : Nantou, Taiwan

Area : 47,850 Square Meters, including

- Factory I : specialty Conveyor Belt
- Factory II : Light Duty Conveyor Belt
- Factory III : Industrial Fabric Factory
- Factory IV : Heavy Duty Conveyor Belt

Main Products :

Rubber Conveyor Belt, Rubber Sheet,
 Industrial Fabric

Brand : **KING**

Product Applications

Production Range :

Belt Width : 300mm~4000mm (12" ~ 160")
 Belt Thickness : 0.8mm~40mm ($\frac{1}{32}$ ~ $1\frac{1}{2}$)
 Special Products Width:Max. 12 Meter

Fabric Type :

Cotton, EP, NN, MONO, SW, Kevlar(KA), Steel Cord(ST), IW(STF)

Standard Applied :

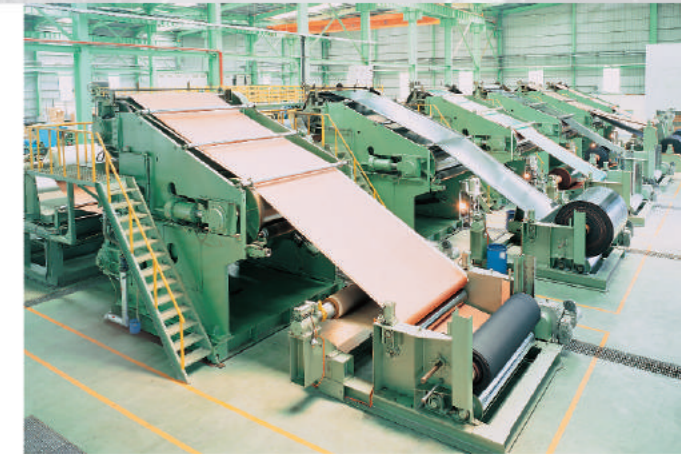
CNS, JIS, ISO, DIN, BS, AS, IS, SABS, ASTM,
 MSHA, GBT

Applications :

Industry, Aviation, Mining, Gravel, Cement, Iron and
 Steel, Power Plant, Construction, Animal Hus-
 bandry, Agriculture, Logistic, Food, Wharf, Coal,
 Papermaking, etc.



- 1986 CNS Qualification Certificate
- 1989 MCS Qualification Certificate
- 1995 ISO-9001 Quality Management System Certificate
- 1997 4th Session Outstanding SME Award
- 2000 4th Session Rising Star Award
- 2002 3rd Session Outstanding SME Golden Award
- 2003 Golden Root Award
- 2005 14th National Award
- 2006 Beautification Creativity Champion of National Industrial District Taiwan
- 2009 ISO14001 Environmental Management System Certificate
- 2010 Stock market listed in Taiwan and got OHSAS 18001
- 2011 Industrial Sustainable Excellence Award
- 2012 The manufactory Champion of green beautifying in Taiwan
- 2013 Awarded with the 1st Taiwan Mittelstand Award by MOEA
- 2014 The 50th Anniversary of Hsin Yung Chien Co., Ltd.



Light Duty Conveyor Belt

Product Application

Automatic production line	Food industry	Logistics center
Agriculture	Airport	Package handling

Characteristics

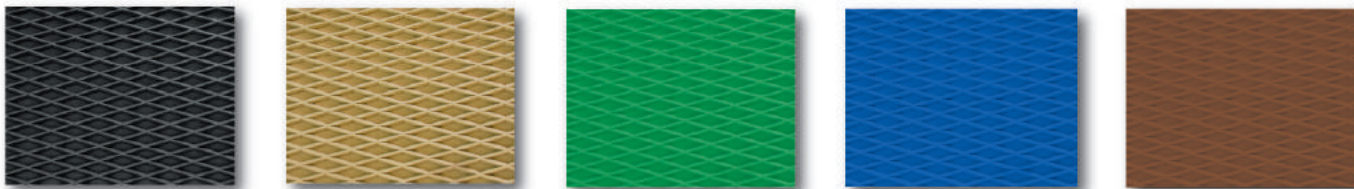
good antiskid ability	Big angle incline transportation	Good ability of shock absorption
Low coefficient of factor	Low noise	Flat surface

Types of the rubber

Abrasion resistant	Flame resistant	Cold resistant
Oil resistant	Heat resistant	Anti-static resistant



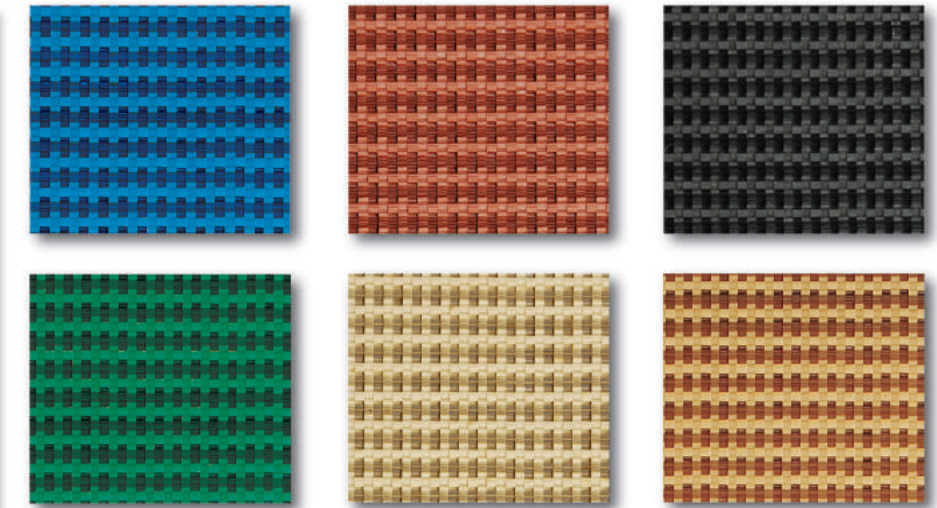
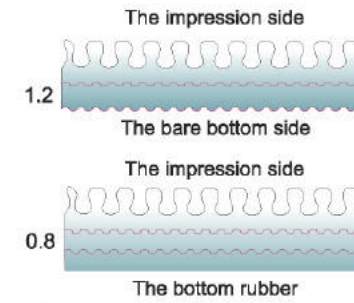
Diamond Belt(DM)



Above colors are for reference only, actual colors will be as per production.

Fabric	Strength (kg/cm/ply)	Color	Width	Ply	Specification
Polyester / Nylon	135	Black, Tan	1200mm~2000mm	2P	DM x BARE
Polyester / Spun	160	Green, Brown		DM x 1/32"	
Nylon / Nylon	200	Pure Gum, Blue	48"~78"	3P	DM x 1.0mm

Rough Top Belt (R.T)



Above colors are for reference only, actual colors will be as per production

Fabric	Strength (kg/cm/ply)	Color	Width	Ply	Specification
Polyester / Nylon	135	Black, Tan	1500mm-2000mm	1P	RT x BARE
Polyester / Spun	160	Green, Brown		2P	RT x 1.5mm
Nylon / Nylon	200	Pure Gum, Blue	60"~78"	3P	RT x 1/16"

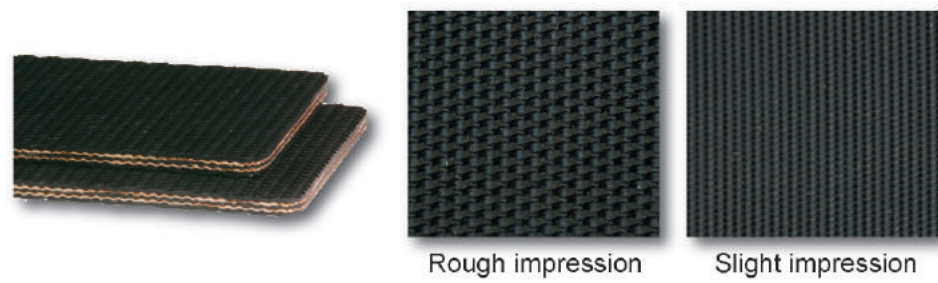
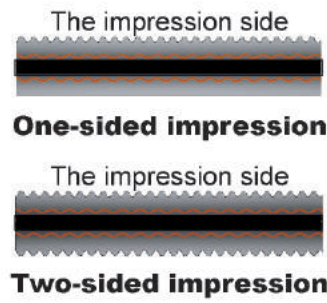
Baler Belt



Fabric	Strength (kg/cm/ply)	Color	Width	Ply	Specification
Polyester / Nylon	135	Black	1200mm ~ 2000mm	2P	DM x 1/32"
Polyester / Spun	160			MRT x 1/32"	
Nylon / Nylon	200	48"~78"	3P	MRT x 1.0mm	
					1/32" x 1/32"
					1.0mm x 1.0mm



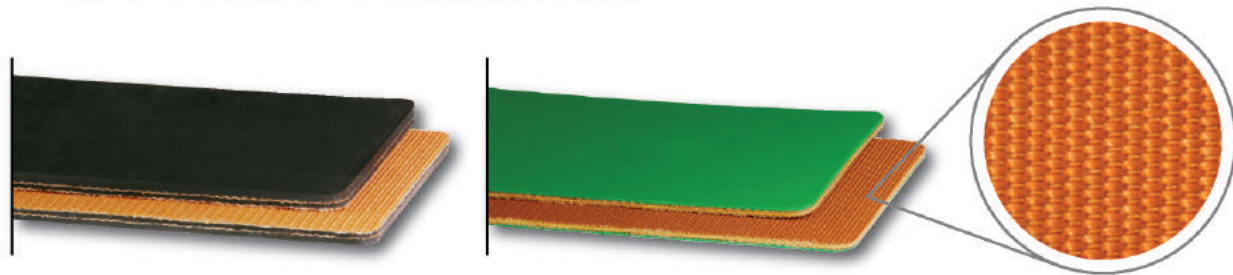
Impression Belt



Impression	Fabric	Strength (kg/cm/ply)	Color	Width	Ply	Specification
Rough impression (Mini R.T)	Polyester/ Nylon	100	Black	1200mm ~ 4000mm 48"~160"	1P	1.0mm x 1.0mm
	Polyester / Spun	135			2P	2.0mm x 1.0mm
	Nylon / Nylon	160			3P	2.0mm x Bare
Slight impression	Straight Warp	200		1200mm ~ 2133mm 48"~84"	1P	3.0mm x 1.5mm
		315			2P	1/32" x 1/32"
		400			1P	1/16" x 1/32"
				2P	1/16" x 1/16"	
						1/16" x Bare
						1/8" x 1/16"

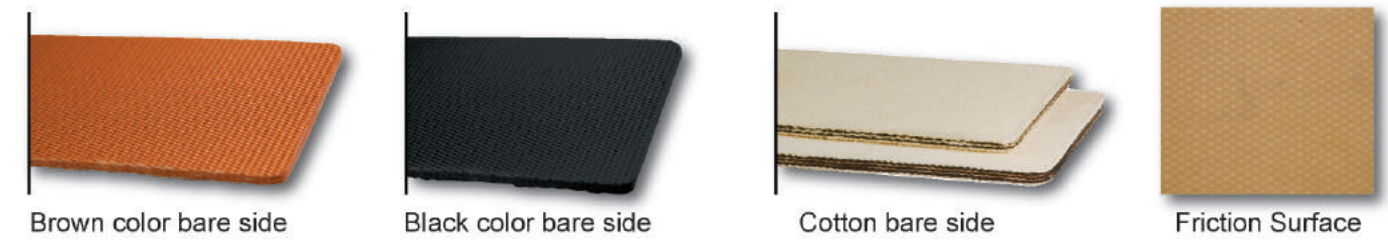
■ The surface of the conveyor belt can be designed to have different impression patterns according to the conveyed material or conveyor angles of the transportation.

Bare Bottom Belt



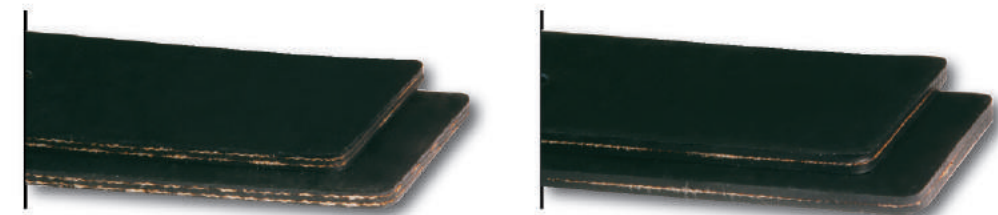
Fabric	Strength (kg/cm/ply)	Color	Width	Ply	Specification
Polyester / Nylon	135	Black	1200mm ~ 4000mm	1P	0.8mm x bare
Polyester / Spun	160	Green		48"~160"	2P
Polyester / Mono	250		3P		1.5mm x bare
	350				
					3.0mm x bare
					1/32" x bare
					1/16" x bare
					1/8" x bare
					1/4" x bare

Bare & Bare Belt



Fabric	Strength (kg/cm/ply)	Color	Width	Ply	Specification
Polyester / Nylon	135	Brown Black	1200mm ~ 4000mm	2P	Bare x Bare
Polyester / Spun	160 200		48"~160"	3P	
Cotton	28oz	White	1200mm ~ 2133mm 48"~84"	2P ~ 6P	Bare x Bare FS x Bare FS x FS
	32oz		1200mm~1524mm 48"~60"		
Cotton & Polyester / Nylon	32oz & 135 32oz & 160	White/Black	(Available customized width up to 2133mm(84"))	(1P+2P)	Bare x 1.5mm

Thin Cover & Cover Belt



Fabric	Strength (kg/cm/ply)	Color	Width	Ply	Specification
Polyester / Nylon	100	Black	1200mm ~ 4000mm 48"~160"	1P	0.8mm x 0.8mm
	135	Green			1.0mm x 1.0mm
Nylon / Nylon	160	Tan		2P	1.5mm x 1.5mm
	200	Gray	3P	2.0mm x 1.0mm	
					3.0mm x 1.5mm
					1/32" x 1/32"
					1/16" x 1/32"
					1/16" x 1/16"
					1/8" x 1/16"
					1/64" x 1/64"

