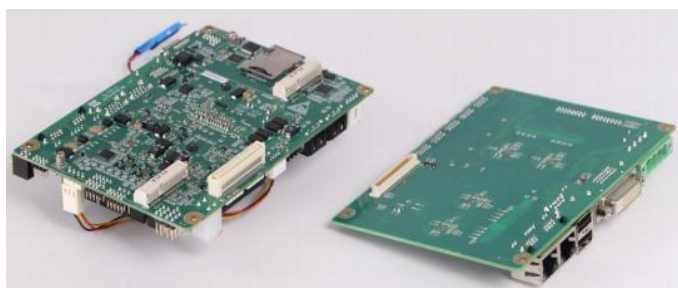


EC3-1821

3.5" SBC with Intel® Skylake-U i7/i5/i3/Celeron

- Onboard Intel® Skylake-U i7/i5/i3/Celeron CPU
- Support DDR4 U-DIMM up to 16GB
- Provide 4xUSB2.0/2xUSB3.0/2xCOM/2xSATA3.0/2xLAN
- Support VGA/HDMI/LVDS/DVI-D tri-display
- Provide a customizable interface
(To get 1xDVI/4xLAN/2xUSB3.0/4xCOM/8ch GPIO/DC)
- Provide Mini PCIE/Msata/SIM/SPI/I2C/SMBUS/LPC



Specifications (Mainboard)

System	
Processor	Onboard i7-6600U/i5-6300U/i3-6100U/Celeron 3955U and etc
Chipset	Intel® Skylake-U
Memory	Provide 1XDDR4 U-DIMM 1866/2133MHz, up to 16G
Watchdog Timer	255 levels, programmable by second/minute, timeout interrupt or system reset.
Expansion Interface	SPI/I2C/SMBUS/LPC, 1xMini PCIE, SIM card holder, 1xmSATA, 1xcustomizable interface
Storage	
Storage	2xSATA 3.0
I/O Interface	
USB	4xUSB 2.0; 2xUSB 3.0
Serial Port	2xCOM
GPIO	8ch GPIO
Audio	Support HDA
Display	
Display	Support VGA, HDMI, LVDS, DVI-D(optional) (VGA and DVI-D share the same signal channel) Support three independent display
Ethernet	
Ethernet	2x10/100/1000Mbps LAN RJ45
Mechanical and Environmental	
Dimensions (WxD)	146 (mm) x 101(mm)
Operating Temperature	0°C ~60°C (extendable to -40°C ~85°C); 5%~95% (non-condensing)
Storage Temperature	-40°C ~85°C, 5%~95% (non-condensing)
Operating Humidity	5%-95%,non-condensing
Power	

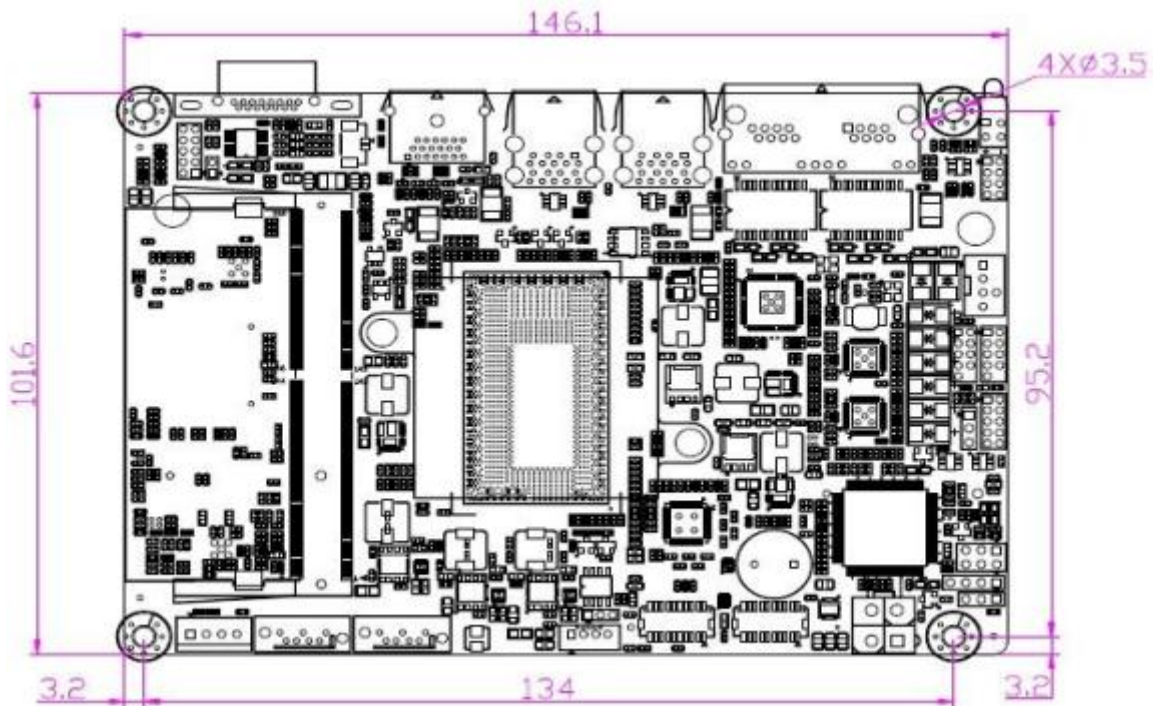


Power Supply	12V DC input
Operation System	
Operation System	WIN7, WES7, WIN8, WIN10, LINUX

Specification (Expansion board)

Connection	By customizable interface
Display	DVI-D (Share the same signal channel with VGA on on MB, workable if remove VGA)
LAN	4x10/100/1000Mbps LAN (2xRJ45/2xWafer)
I/O	2xUSB 3.0, 4xCOM, 8ch GPIO
Power	Support DC power supply (Terminal block)
Dimension (WxD)	146 (mm) x 101(mm)

Dimension



Unit: mm

Ordering Information

Part Number	Model Number	Description
0030-022211	EC3-1821-3955U	Support VGA+LVDS+HDMI/2xLAN/HDA/4xUSB3.0, 2xUSB2.0/2xSATA3.0/mSATA/Mini PCIE/SIM card holder/2xCOM
0030-022151	EC3-1821-136100U	Support VGA+LVDS+HDMI/2xLAN/HDA/4xUSB3.0, 2xUSB2.0/2xSATA3.0/mSATA/Mini PCIE/SIM card holder/2xCOM/Customizable interface
0030-022221	EC3-1821-156300U	Support VGA+LVDS+HDMI/2xLAN/HDA/4xUSB3.0, 2xUSB2.0/2xSATA3.0/mSATA/Mini PCIE/SIM card holder/2xCOM/Customizable interface
0030-022231	Ec3-1821-i76600u	Support VGA+LVDS+HDMI/2xLAN/HDA/4xUSB3.0, 2xUSB2.0/2xSATA3.0/mSATA/Mini PCIE/SIM card holder/2xCOM/Customizable interface
0060-005071	EF-EIO-152	Support DVI-D/4xLAN/2xCOM/2xUSB2.0/DC input