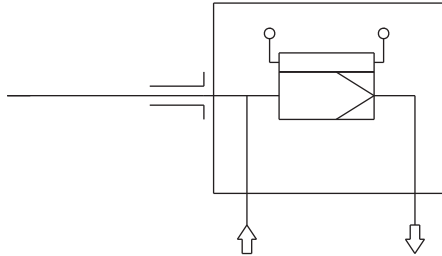



Sample gas probe GAS 222.20 Atex

Flow Diagram



Description:

- Heated sample gas probe with downstream filter and weather protection shield
- Filter can be replaced without tools
- Effective insulation and protection shield
- Self-regulating up to 80 °C
- Dust concentration up to 2 g/m³
-  This probe is approved for use in Zone 1, 21 and for gas sampling from Zone 0, 20 (hazardous areas)*.



Technical Data:

- Material: 1.4571
- Seals: Graphite/1.4404 and see filter elements
- Max. working pressure: 6 bar
- Max. flow 1000 l/h
- Max. inlet temperature process media 135 °C
- Voltage: 230 V, 50/60 Hz
or 115 V, 50/60 Hz
- External circuit-breaker Type C:
2 A for 230 V, 50/60 Hz
3 A for 115 V, 50/60 Hz
- Ambient temperature -20 to +50 °C
- Temperature: self-regulating approx. +80 °C
- Ex-marking of the basic unit *:
1GD / 2GD T4 T130 °C

Order information: Base units:

- GAS 222.20 Atex 230V p/n 4622220X2
- GAS 222.20 Atex 115V p/n 4622220X1

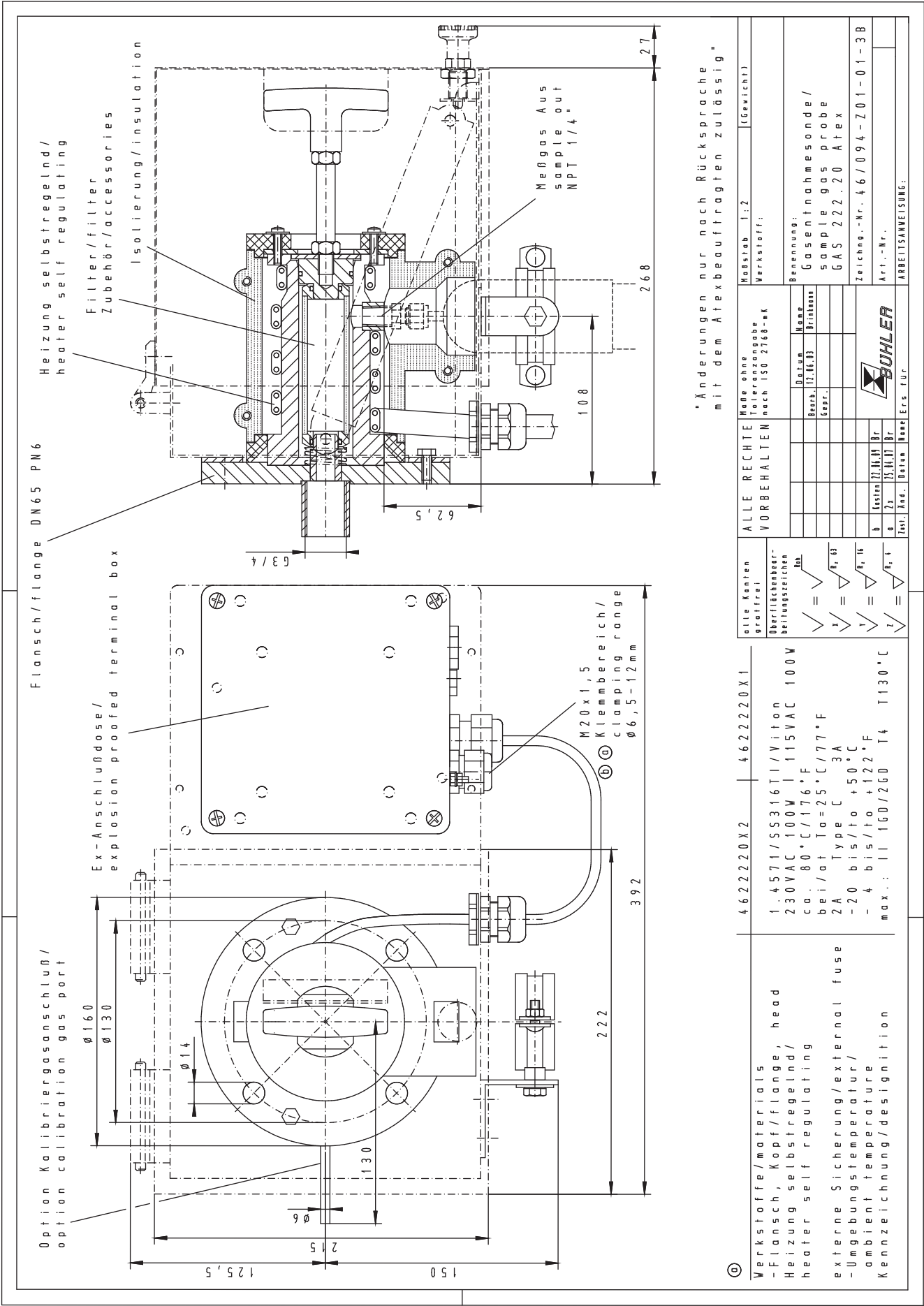
Options:

To customize the base unit to meet the needs of any application, please refer to data sheet DE461099 "Accessories for Gas Sample Probes".

- Various probe tubes
- Unheated extensions
- Filters
- Calibration gas port
- ANSI flange 3"

* Please note that installed accessories may change the approved category of the probe. (Regard type plate and operating instructions)

For general information see data sheet "Gas Sample Probes GAS 222" DE461000.



"Änderungen nur nach Rücksprache mit dem ATEXbeauftragten zulässig"

① Werkstoffe/materials -Flansch, Kopf/flange, head Heizung selbstregelnd/ heater self regulating externe Sicherung/external fuse -Umgebungstemperatur/ ambient temperature Kennzeichnung/designation	4622220X2 1.4571/SS316TI/Viton 230VAC 100W I 115VAC 100W ca. 80°C/176°F bei/at Ta=25°C/77°F 2A Type C 3A -20 bis/to +50°C - 4 bis/to +122°F max.: I 160/260 T4 T130°C	4622220X1	ALLE RECHTE VORBEHALTEN Maße ohne Toleranzangabe nach ISO 2768-mk	Werkstoff: Benennung: Gasentnahmesonde/ sample gas probe GAS 222.20 ATEX Zeichnung.-Nr. 46/094-Z01-01-3B Art.-Nr. BUHLER ARBEITSANWEISUNG:	Maßstab 1:2 (Gewicht) (Gewicht)
	alle Kanten gratfrei Oberflächenbear- beitungszustand Ra ✓ = ✓ x = x y = y z = z	Datum 17.10.03 Name Pritmann Bearb. Gepr.	B 6 7x 15.H.17 Br	Inst./ 7x 15.H.17 Br	Inst./ 7x 15.H.17 Br